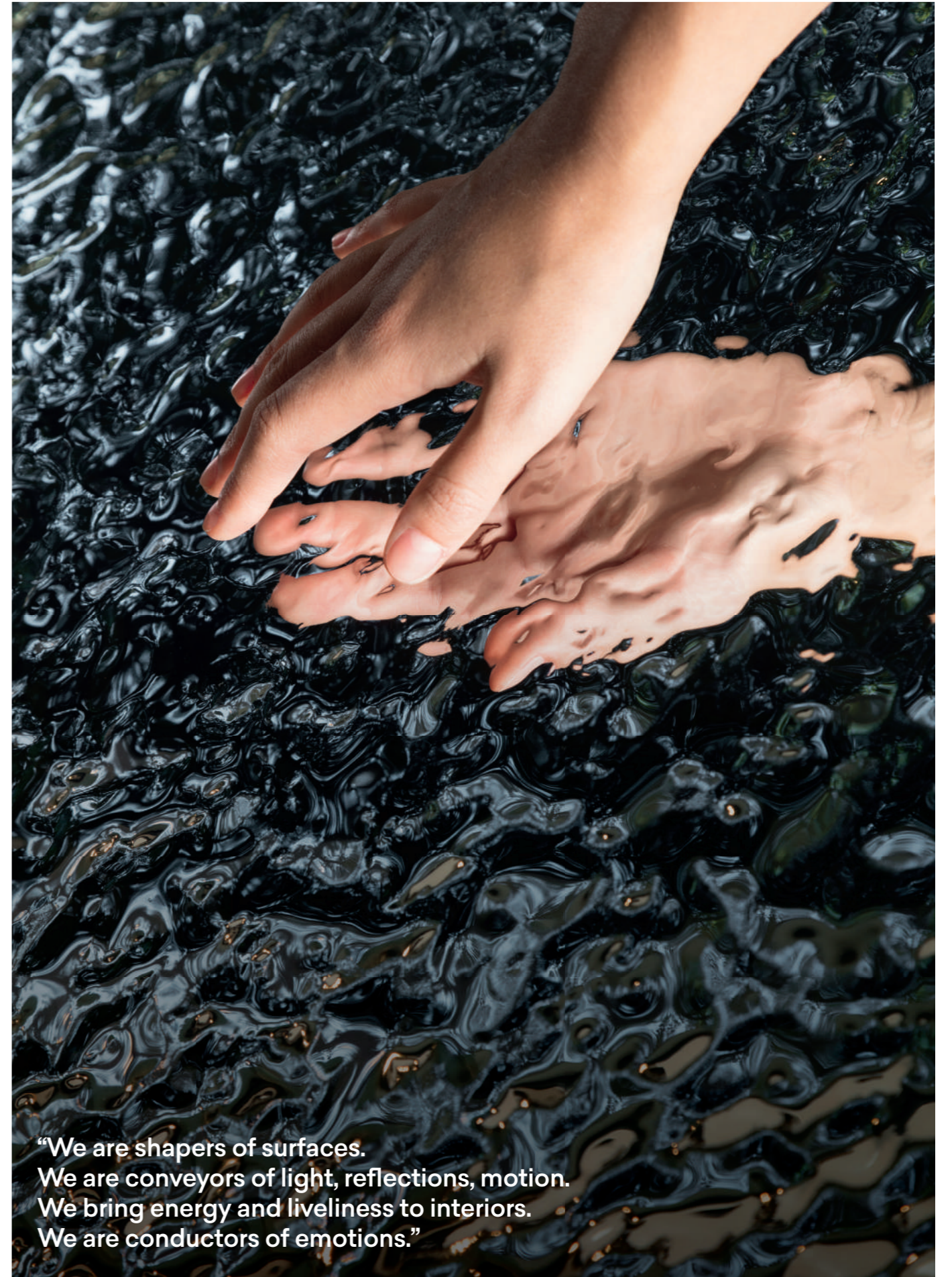


**HOMAPAL**





“We are shapers of surfaces.  
We are conveyors of light, reflections, motion.  
We bring energy and liveliness to interiors.  
We are conductors of emotions.”



photo credits: Simone Fiorini for STUDIO2046

# Homapal – Shaping Emotions in Interiors

EN

The Homapal European collection presents a variety of decorative metal laminates that could not be more different. It comprises over 150 decors that cover a wide aesthetic spectrum: from classic elegance to modern minimalism, from handcrafted artistry to industrial chic. Homapal uses thin rolled foils made of aluminium, copper, brass, and stainless steel as the top layer of their laminates. A special embossing process gives the surfaces their unique textures.

The Homapal European collection combines the texture and colour of metal with hard-wearing, flexible and lightweight laminates. The texture of metal surfaces enlivens the senses and creates inspiring ideas for interior designers. Silver, gold, brass and copper bring a delicate sheen to highly creative designs.

Homapal laminates are used both in mass produced furniture and public settings, essentially wherever interior surfaces are to be enhanced. Homapal metals breathe emotionality into every high-quality interior design project.

**The power to produce motion and shape emotions.**

DE

Mit der europäischen Kollektion vereint Homapal eine Vielzahl dekorativer Metallschichtstoffe, wie sie unterschiedlicher nicht sein können. Sie umfasst über 150 Dekore, die ein breites ästhetisches Spektrum abdecken: von klassischer Eleganz bis zu modernem Minimalismus, von handwerklicher Kunstfertigkeit bis zu industriellem Chic. Homapal verwendet dünne Folien aus Aluminium, Kupfer, Messing und Edelstahl als oberste Schicht der Schichtstoffe. Ein spezielles Prägeverfahren verleiht den Oberflächen ihre einzigartigen Strukturen.

Die europäische Homapal Kollektion vereint die Textur und Farbe von Metall mit strapazierfähigen, flexiblen und leichten Laminaten. Die Textur der Metalloberflächen belebt die Sinne und inspiriert Innenarchitekten zu neuen Ideen. Silber, Gold, Messing und Kupfer verleihen kreativen Designs einen dezenten Glanz. Homapal-Dekore werden sowohl in der Möbelindustrie als auch im öffentlichen Raum eingesetzt – überall dort, wo Oberflächen im Innenbereich aufgewertet werden sollen. Homapal-Metalle verleihen jedem hochwertigen Einrichtungsprojekt eine emotionale Note.

**Die Macht, Bewegung zu erzeugen und Emotionen zu formen.**



# Elements

## Brushed and Selected Textures



EN

**Elements** capture the expressiveness of pure metal. Brilliant and full of energy. Cool, yet with the capacity to provide warmth. Characterised by the dynamic interplay of light and reflection. For indoor spaces with outstanding liveability. Bronze, copper, steel, silver and gold – these basic colours with their brushed surfaces focus on the essentials and represent the four elements of fire, water, air and earth. They are supplemented by a total of five carefully selected shades with typical metal textures that capture subtle nuances and add vibrant diversity.

**Five metals for five different surface finishings. Brushed tones are offered in a range of extra 12 different shades to capture the expressiveness of pure metal.**

DE

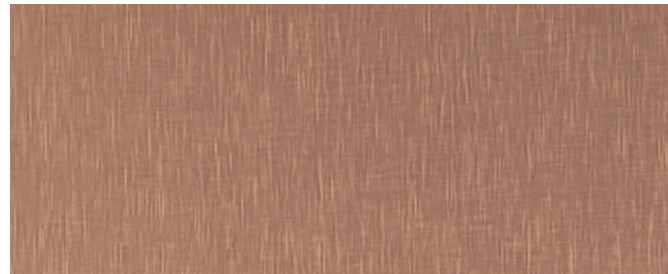
**Elements** lebt von der Ausdruckskraft des reinen Metalls. Glänzend und voller Energie. Kühl, aber mit der Fähigkeit, Wärme zu spenden. Dynamisch im Spiel mit Licht und Reflexion. Lebenswerte für Innenräume. Bronze, Kupfer, Stahl, Silber und Gold – die Grundfarben mit ihrer gebürsteten Oberfläche konzentrieren sich auf das Wesentliche und repräsentieren die vier Elemente Feuer, Wasser, Luft und Erde. Dazwischen bilden sorgfältig ausgewählte Töne mit insgesamt fünf für Metalle typischen Strukturen die feinen Nuancen lebendiger Vielfalt ab.

**Fünf Metalle für fünf verschiedene Oberflächenveredelungen. Wir bieten Strichmatt Dekore in 12 verschiedenen Farbtönen an, um die Ausdruckskraft von reinem Metall einzufangen.**

## Brushed Essentials



451 Alu Brushed Bronzestone / Alu-Strichmatt Bronzeton



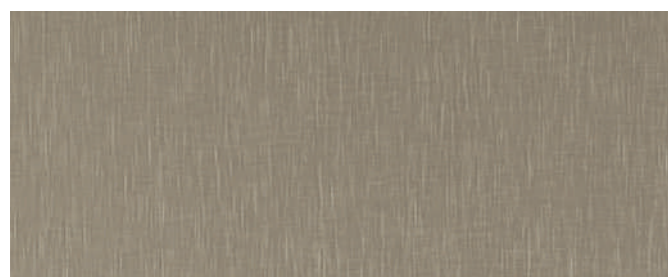
447 Alu Brushed Coppertone / Alu-Strichmatt Kupferon



441 Alu Brushed Natural / Alu-Strichmatt Naturton

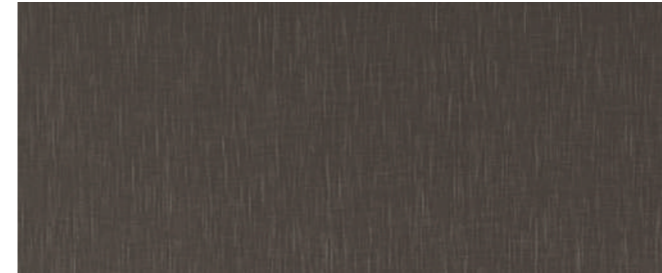


546 Alu Brushed Stainless Steeltone / Alu-Strichmatt Edelstahlton

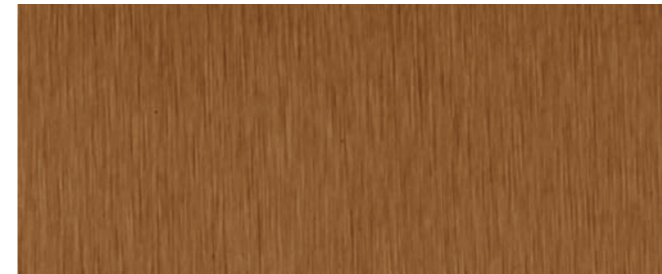


442 Alu Brushed Goldtone / Alu-Strichmatt Goldton

## Brushed Tones



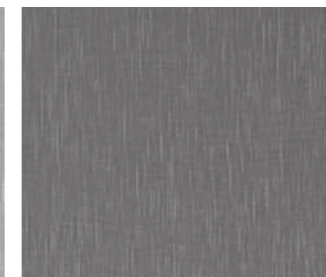
M5312 Brushed Umbra / Brushed Umbra



M6422 Brushed Cupro / Brushed Cupro



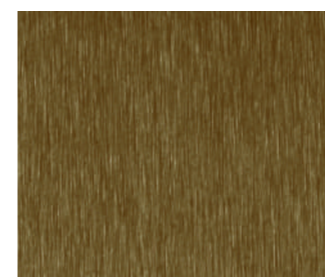
791 Alu Brushed Natural Special ◆  
Alu-Strichmatt Naturton Spezial



796 Alu Brushed Steeltone Special ◆  
Alu-Strichmatt Stahlton Spezial



448 Alu Brushed Black / Alu-Strichmatt Schwarz



M6423 Brushed Brass / Brushed Brass



794 Alu Brushed Goldtone Special ◆  
Alu-Strichmatt Goldton Spezial



456 Alu Brushed Medium Bronzestone / Alu-Strichmatt Bronzeton Medium



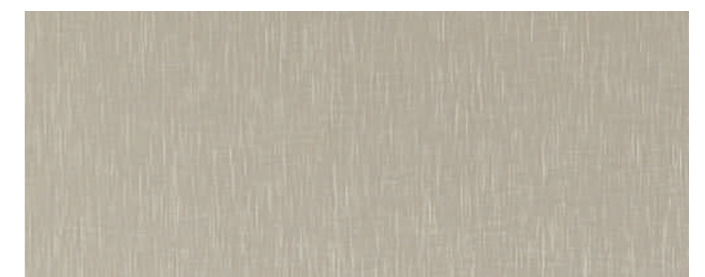
454 Alu Brushed Rosegold / Alu-Strichmatt Rosé Gold



446 Alu Brushed Steeltone / Alu-Strichmatt Stahlton  
409/000 Alu Brushed Steeltone / Alu-Strichmatt Stahlton ●



M5311 Brushed Argent / Brushed Argent



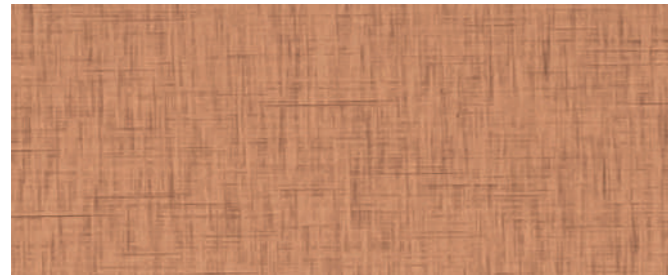
325 Alu Brushed Champagne / Alu-Strichmatt Champagnerton

# Homapal Metals – Elements

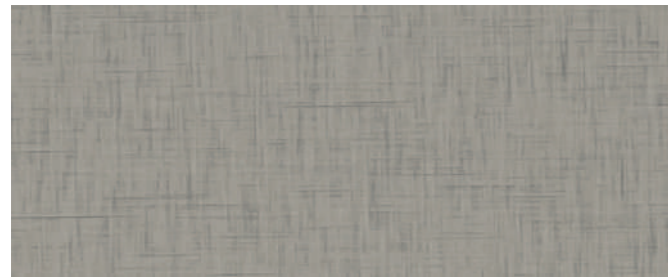
## Crossbrushed



439 Alu Crossbrushed Brownish Grey / Alu-Kreuzstrichmatt Taupe



437 Alu Crossbrushed Coppertone / Alu-Kreuzstrichmatt Kupferon



431 Alu Crossbrushed Natural / Alu-Kreuzstrichmatt Naturton



433 Alu Crossbrushed Stainless Steeltone / Alu-Kreuzstrichmatt Edelstahlton

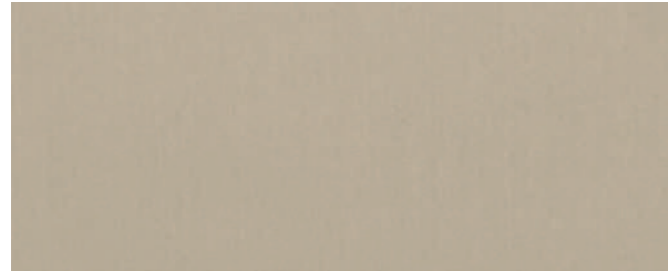


434 Alu Crossbrushed Goldtone / Alu-Kreuzstrichmatt Goldton



• 434 Alu Crossbrushed Goldtone / Alu-Kreuzstrichmatt Goldton

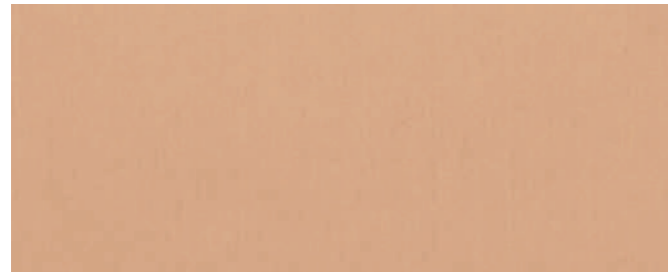
## Plain Polished



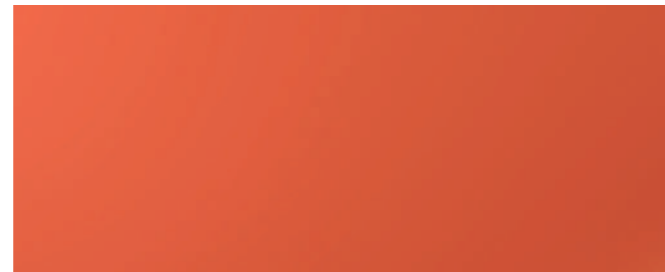
M2006 Alu Plain Polished Bronzestone / Alu-Gebürstet Bronzeton



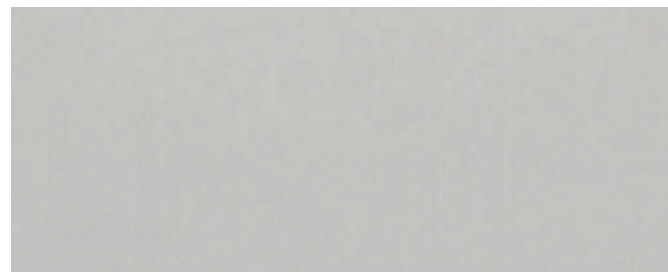
351 Alu Plain Polished Solar Glow / Alu-Gebürstet Solar Glow ✦



347/000 Alu Plain Polished Coppertone / Alu-Gebürstet Kupfer-ton



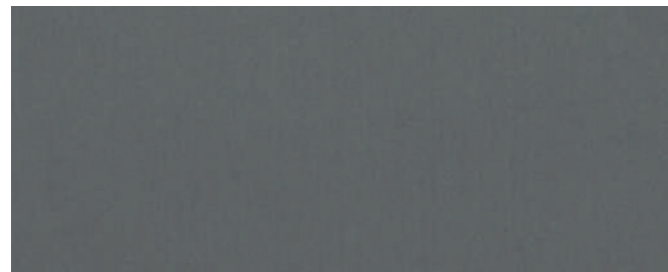
353 Alu Plain Polished Clay Jar / Alu-Gebürstet Clay Jar ✦



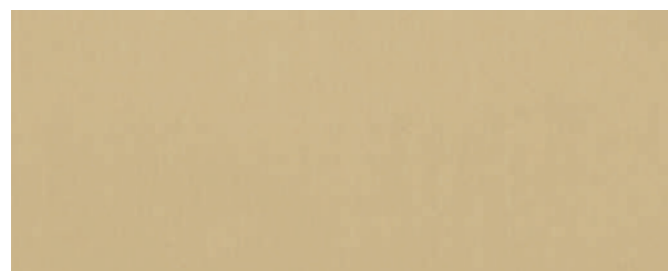
444N Alu Plain Polished Natural / Alu-Gebürstet Naturton  
820/000 Alu Softmatt Natural / Alu-Gebürstet Softmatt Naturton ●



359 Alu Plain Polished Moss Green / Alu-Gebürstet Moss Green ✦



475/000 Alu Plain Polished Gunmetal Matt / Alu-Gebürstet Gunmetal Matt



342/000 Alu Plain Polished Goldtone / Alu-Gebürstet Goldton

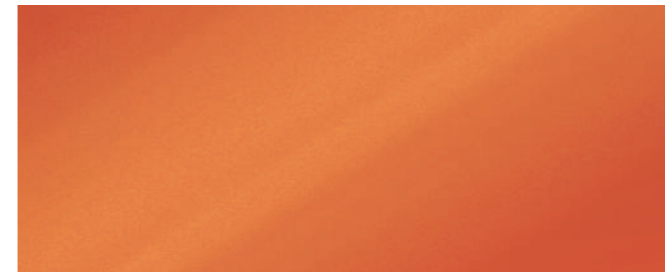
## Mirror Polished



472 Alu Mirror Polished Solar Glow / Alu-Spiegelglanz Solar Glow ✦



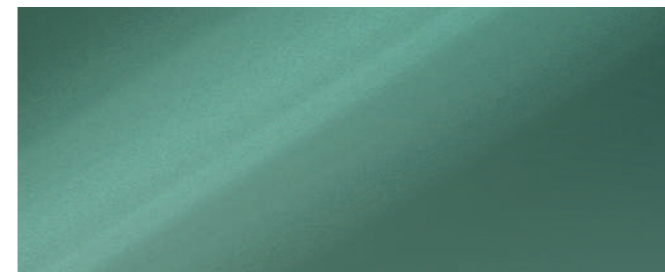
473 Alu Mirror Polished Tea / Alu-Spiegelglanz Tea



478 Alu Mirror Polished Clay Jar / Alu-Spiegelglanz Clay Jar ✦



477 Alu Mirror Polished Coppertone / Alu-Spiegelglanz Kupfer-ton



476 Alu Mirror Polished Moss Green / Alu-Spiegelglanz Moss Green ✦



470 Alu Mirror Polished Superior Natural / Alu-Spiegelglanz Naturton Superior  
485/000 Alu Mirror Polished Special Natural / Alu-Spiegelglanz Spezial Naturton ●



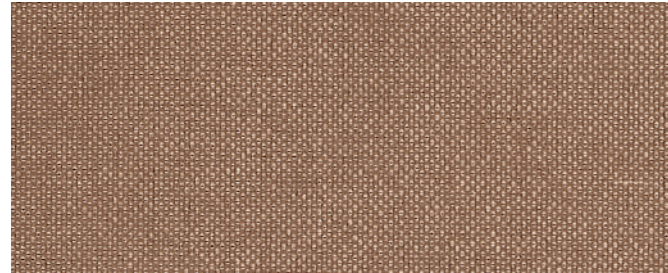
474 Alu Mirror Polished Smokey Grey / Alu-Spiegelglanz Smokey Grey



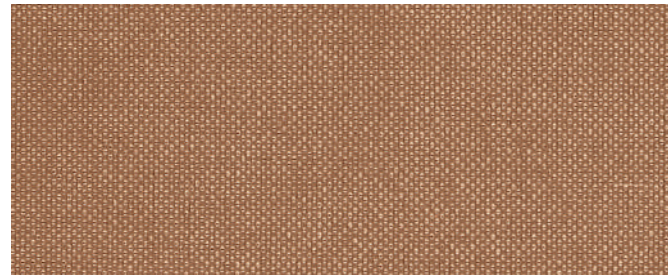
471 Alu Mirror Polished Goldtone / Alu-Spiegelglanz Goldton

# Homapal Metals – Elements

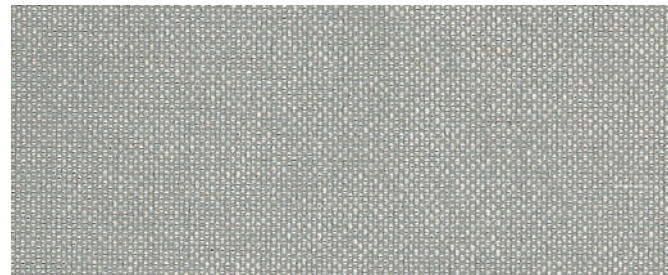
## Plex



807/980 Alu Plex Bronzestone / Alu-Relief Plex Bronzeton



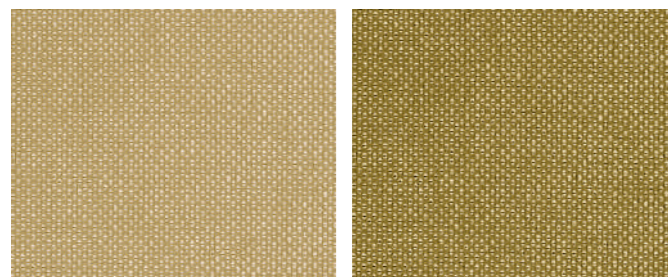
M6424 Plex Copper / Alu-Relief Plex Kupferston



M5308 Plex Aluminium / Alu-Relief Plex Aluminium



423/980 Alu Plex Stainless Steelstone / Alu-Relief Plex Edelstahlton



M5309 Plex Gold / Alu-Relief Plex Goldton M6426 Plex Brass / Alu-Relief Plex Brass



• M5309 Plex Gold / Alu-Relief Plex Goldton



• M5392 Copper Veil / Copper Veil

## Gestures Industrial Craftmanship



EN

At the Homapal factory, a dedicated team upholds the art of traditional metal finishing. Here, true masters of their craft—highly skilled and creative professionals with years of experience—work with passion and precision. At the heart of their work are real metal laminates with aluminium-, copper- and brass surfaces. Using elaborate mechanical techniques and an expert eye for detail, they explore the creative possibilities and flexibility of these materials. Through grinding, dabbing, rubbing, and colour enhancement, skilled personnel give these metals structure, brush and polish them mechanically, and colour them by hand.

**Skilled hands put emotions into motion.  
Human gestures grind, dab, brush, polish and colour.  
They amplify the surfaces and generate beauty.**

DE

In der Homapal-Manufaktur pflegt ein engagiertes Team die traditionelle Kunst der Metallveredelung. Hier arbeiten wahre Meister ihres Fachs – hochqualifizierte und kreative Fachkräfte mit jahrelanger Erfahrung – mit Leidenschaft und Präzision. Im Mittelpunkt ihrer Arbeit stehen Echtmetalllaminat mit Aluminium-, Kupfer- und Messingoberflächen. Mithilfe ausgefeilter mechanischer Techniken und einem geschulten Auge für Details erkunden sie die kreativen Möglichkeiten und die Flexibilität dieser Materialien. Durch Schleifen, Tupfen, Reiben und Farbveredelung verleihen die erfahrenen Mitarbeiter diesen Metallen Struktur, bürsten und polieren sie maschinell und färben sie von Hand.

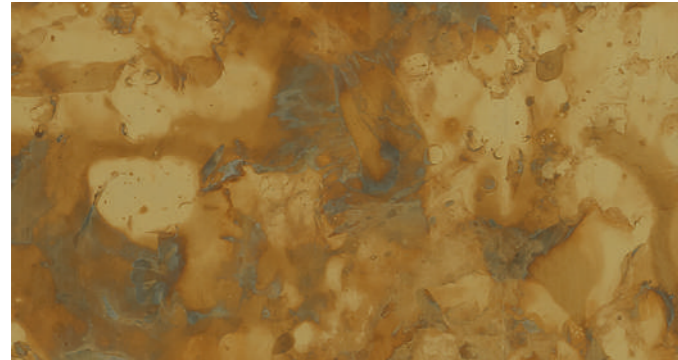
**Geschickte Hände erwecken Emotionen zum Leben  
– durch Handarbeit wie schleifen, tupfen, bürsten  
und polieren. Sie verleihen den Oberflächen  
Ausdrucksstärke und Schönheit.**

# Homapal Metals – Gestures

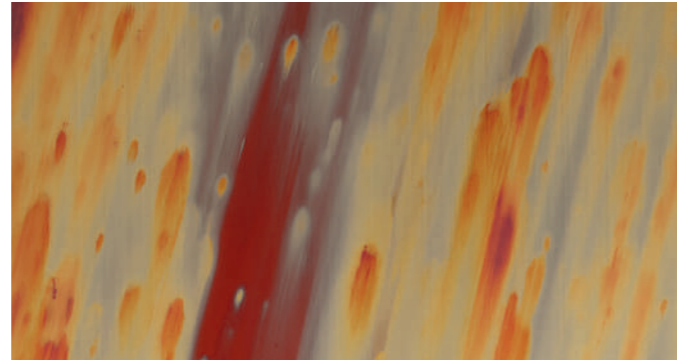
The textures are shown at approx. 1:50 scale  
Die Dekore werden im Maßstab von ca. 1:50 gezeigt

\* vertical joint at about 610 mm  
Stoßfuge bei Breite von ca. 610 mm

◆ New  
Neu



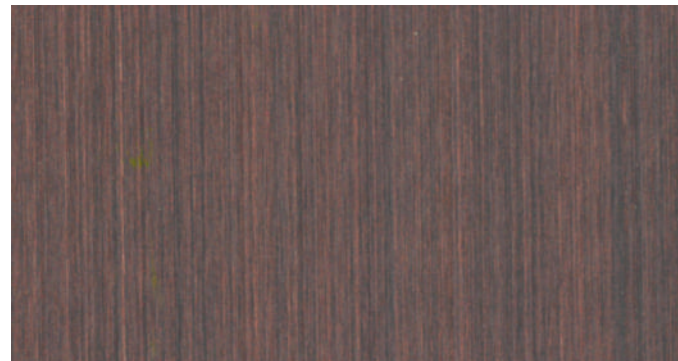
500/491 Brass Plain Antique / Messing-Glatt Antik \*



695D Copper Stratos Diagonal / Kupfer-Glatt Stratos Diagonal



490 Copper Antique / Kupfer-Glatt Antik



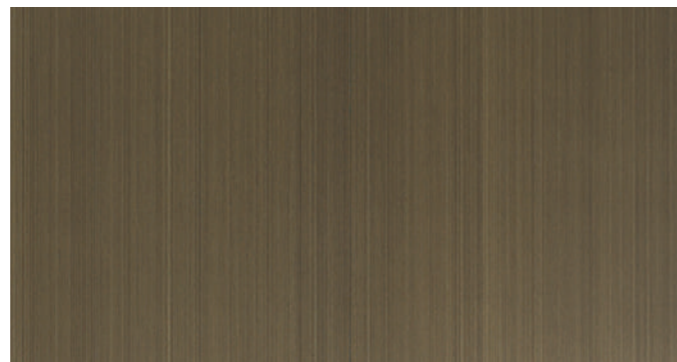
M9958 Antique Rubbed Copper / Antike Rubbed Kupfer



M8547 Matte Oxibronze / Matte Oxibronze \*



M9956 Wax Rubbed Brass / Wax Rubbed Messing ◆ \*

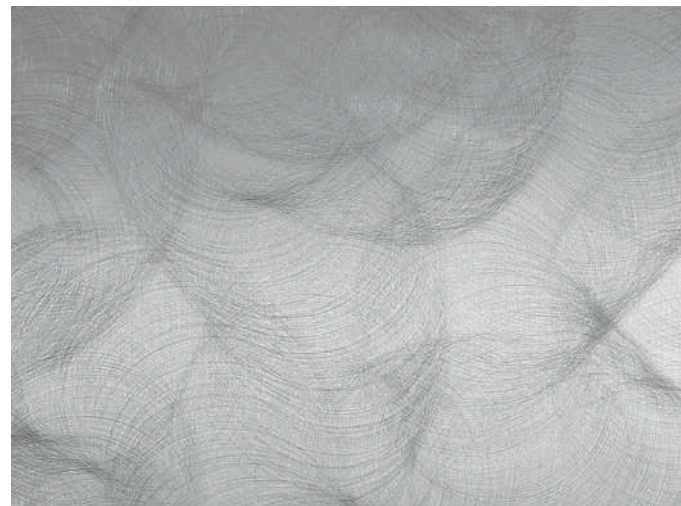


M9957 Oil Rubbed Brass / Oil Rubbed Messing ◆ \*

◆ 695D Copper Stratos Diagonal / Kupfer-Glatt Stratos Diagonal



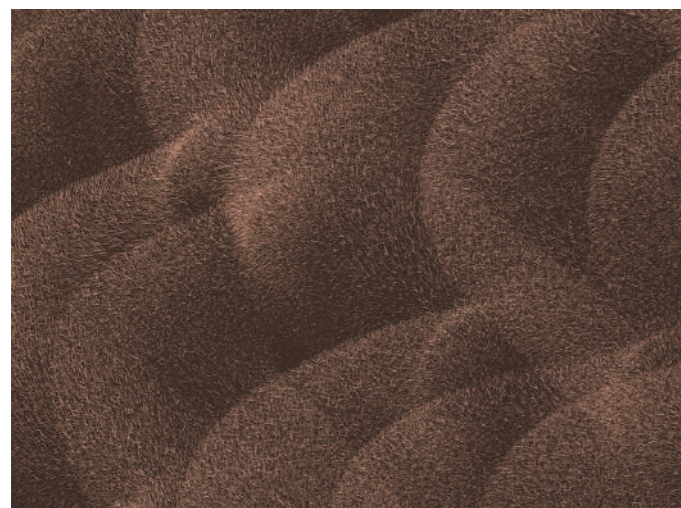
# Homapal Metals – Gestures



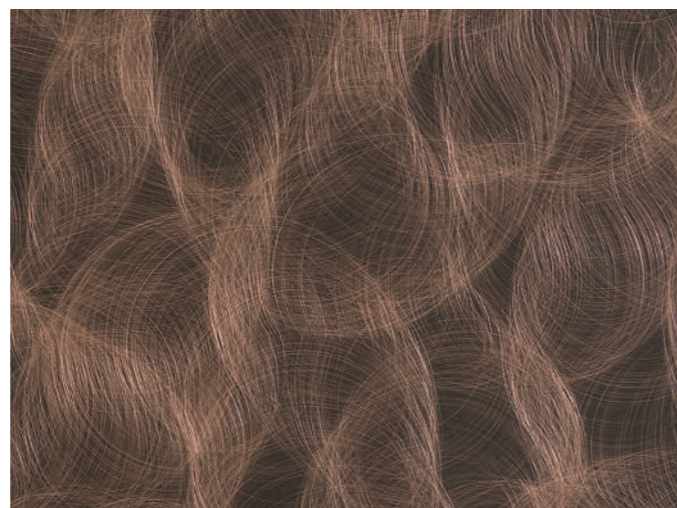
800/200 Alu Crush / Alu-Glatt Crush



M4512 Alu Crush Goldtone / Alu Crush Goldton



401/229 Copper Crush Stipple / Kupfer-Glatt Crush Stipple



401/200 Copper Crush / Kupfer-Glatt Crush



M5392 Copper Veil / Copper Veil



M5391 Graphite Veil / Graphite Veil



• 441/229 Copper Crush Stipple / Kupfer-Glatt Crush Stipple



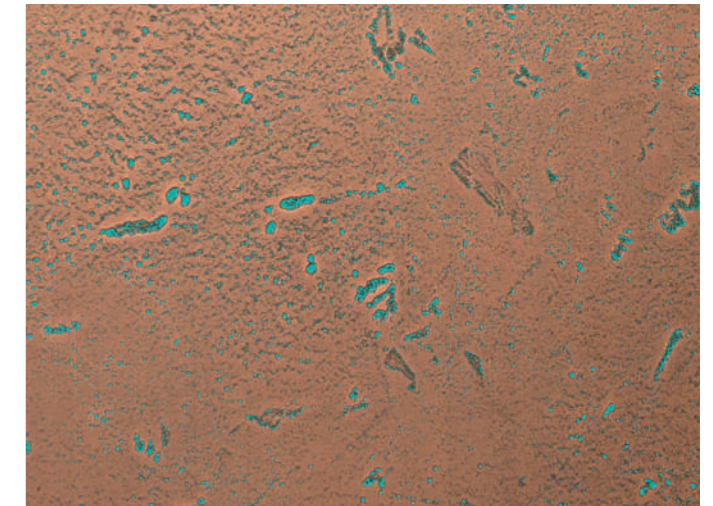
• 630 Copper Black Patinated / Kupfer-Relief Patiniert  
photo credits: Jan Kaiser for DPH Voss

## Homapal Metals – Gestures

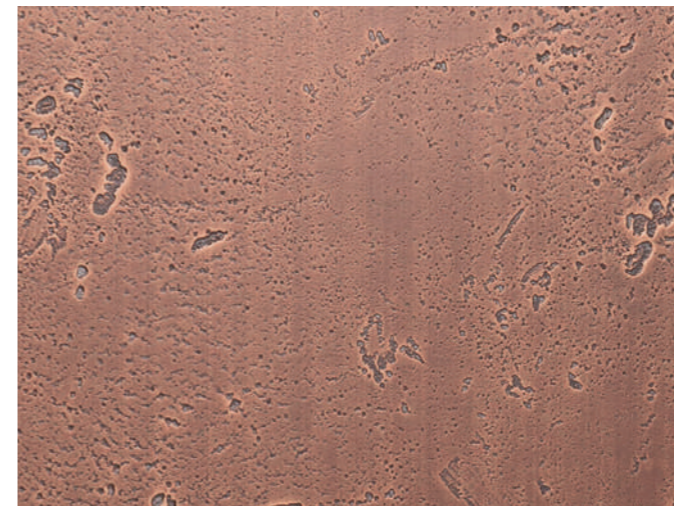
\* vertical joint at about 610 mm  
Stoßfuge bei Breite von ca. 610 mm



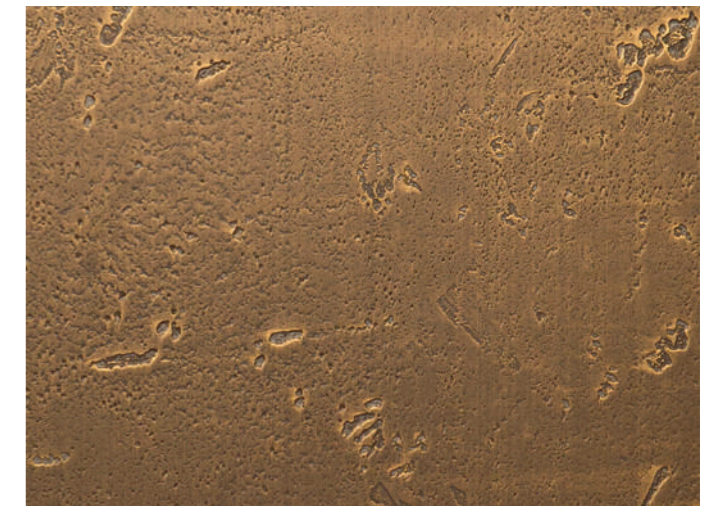
630 Copper Black Patinated / Kupfer-Relief Patiniert



635/502 Copper Moon Turquoise / Kupfer Moon Türkis



636/502 Copper Moon Dark / Kupfer Moon Dunkel



500/502 Brass Moon / Messing Moon \*



637/502 Copper Moon Light / Kupfer Moon Hell



# Perspectives

## Depths. Geometries. Industrial



EN

**Depths** is a collection where nothing seems to stand still: metallic bubbles, the Earth's surface viewed from space, wind-swept waves over the sea, raindrops rippling across a calm lake, swaying reeds by the river, irregular hexagonal forms that feel soft and warm thanks to their textile-like texture.

The graphic patterns of **Geometries**, on the other hand, radiate calm and balance. Regular lines form rhombuses or braided patterns. The contours subtly shift in intensity with the play of light.

**Industrial** draws its inspiration from the forgotten treasures of factory floors. Discover sheet-metal textures adorned with diverse grinding and storage marks, holes and grid patterns: a delicate patina of time for timeworn elegance.

**Depths excavate metals for light tricks and dynamic explorations. Geometries trace lines to form regular and playful movements. Industrial surfaces evoke urban environments.**

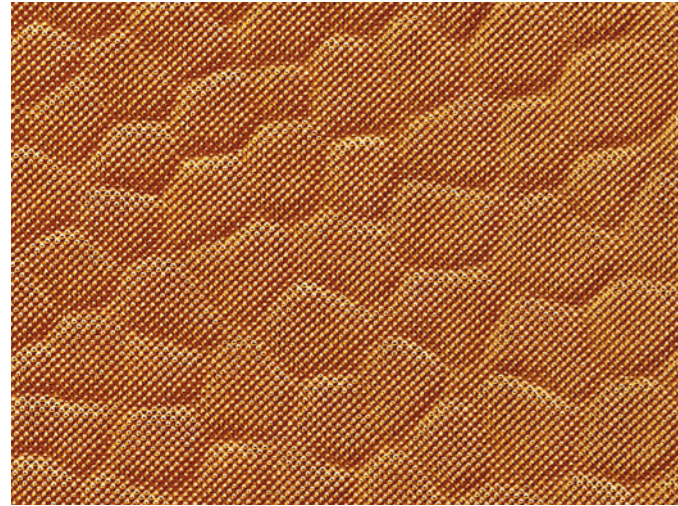
DE

**Depths** ist eine Kollektion, in der nichts stillzustehen scheint: metallische Blasen, die Erdoberfläche aus dem Weltraum betrachtet, windgepeitschte Wellen auf dem Meer, Regentropfen, die über einen ruhigen See kräuseln, wiegendes Schilf am Flussufer, unregelmäßige Sechseckformen, die sich dank ihrer textilartigen Textur weich und warm anfühlen.

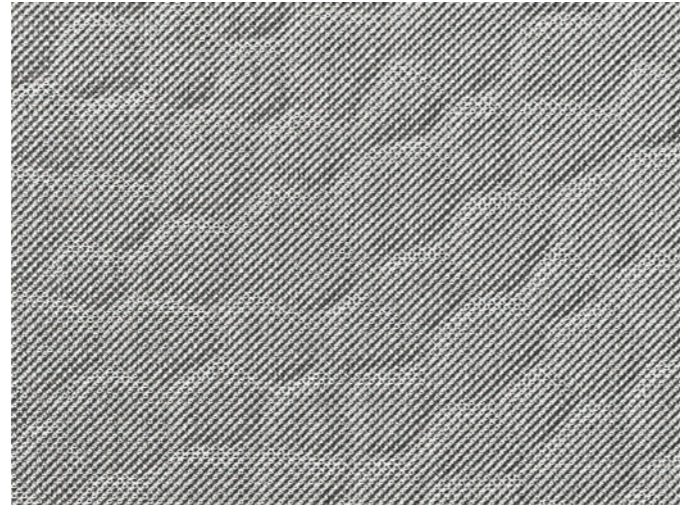
Die grafischen Muster von **Geometries** hingegen strahlen Ruhe und Ausgewogenheit aus. Regelmäßige Linien formen Rauten oder Flechtmuster. Die Konturen verändern ihre Intensität subtil im Spiel des Lichts.

**Industrial** ist inspiriert von den vergessenen Schätzen von Fabrikhallen. Entdecken Sie Blechtexturen, die mit vielfältigen Schleif- und Lagerspuren, Löchern und Gittermustern verziert sind: eine zarte Patina der Zeit für zeitlose Eleganz.

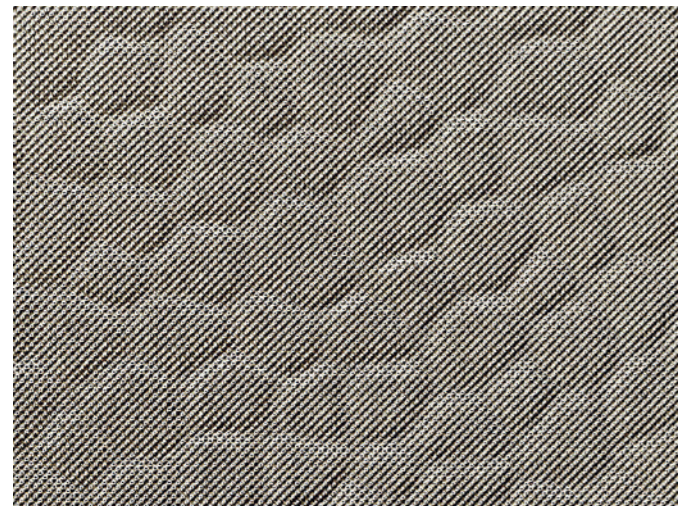
**Depths – Metalle, die Lichteffekte und Dynamik auslösen. Geometries – Durch Linien werden spielerische und regelmäßige Bewegungen erzeugt. Industrial – Oberflächen, die an urbane Umgebungen erinnern.**



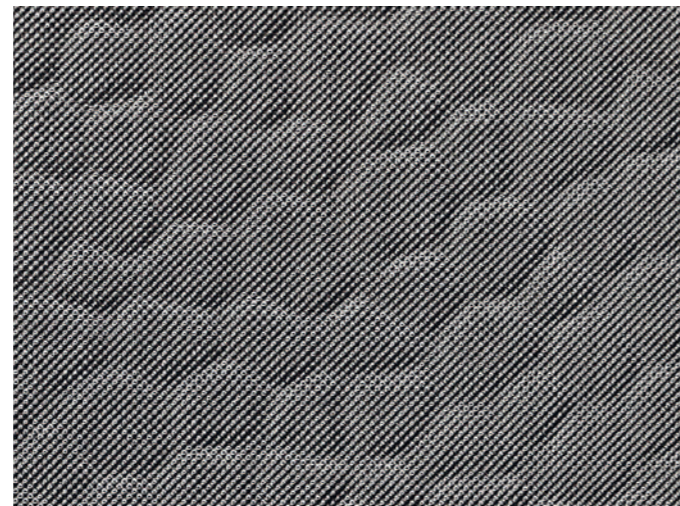
M6429 Hammered Cupro / Hammered Cupro



M6427 Hammered Aluminium / Hammered Aluminium



M6428 Hammered Argent / Hammered Argent

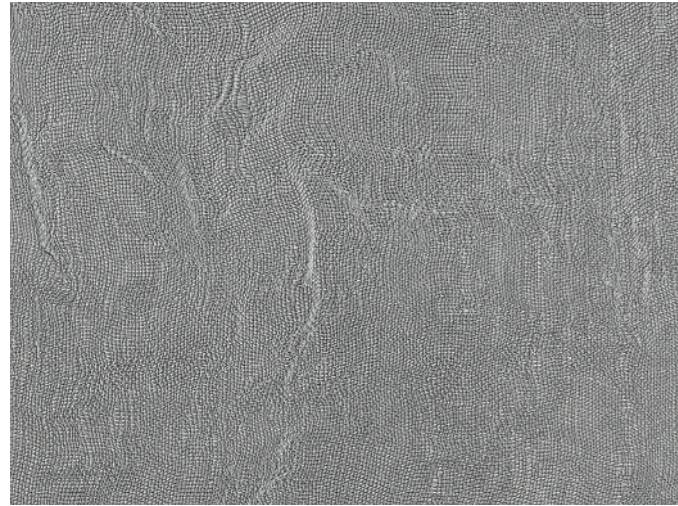


M6431 Hammered Graphite / Hammered Graphite

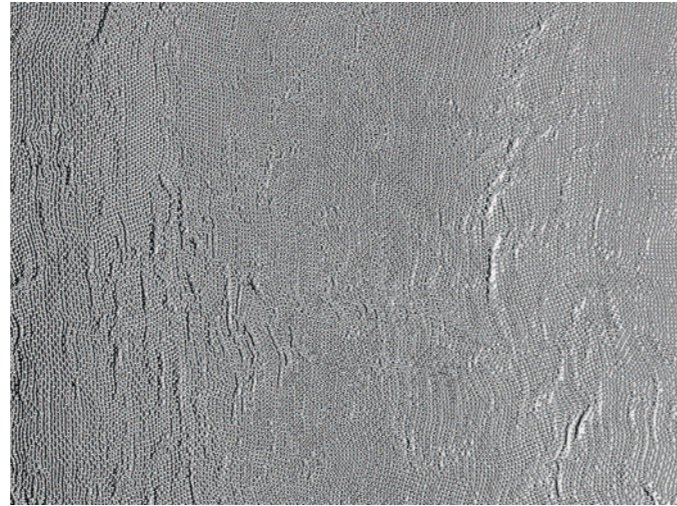


• M6431 Hammered Graphite / Hammered Graphite

# Homapal Metals – Perspectives / Depths



800/100 Alu Mesh Natural / Alu-Relief Mesh Naturton



470/100 Alu Mirror Polished Mesh Natural / Alu-Spiegelglanz Mesh Naturton



471/100 Alu Mirror Polished Mesh Goldtone / Alu-Spiegelglanz Mesh Goldton



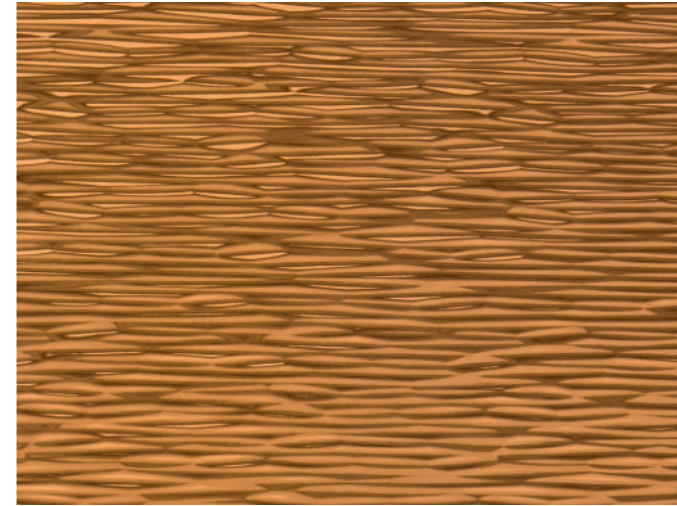
825/100 Alu Mesh Champagne / Alu-Relief Mesh Champagnerton



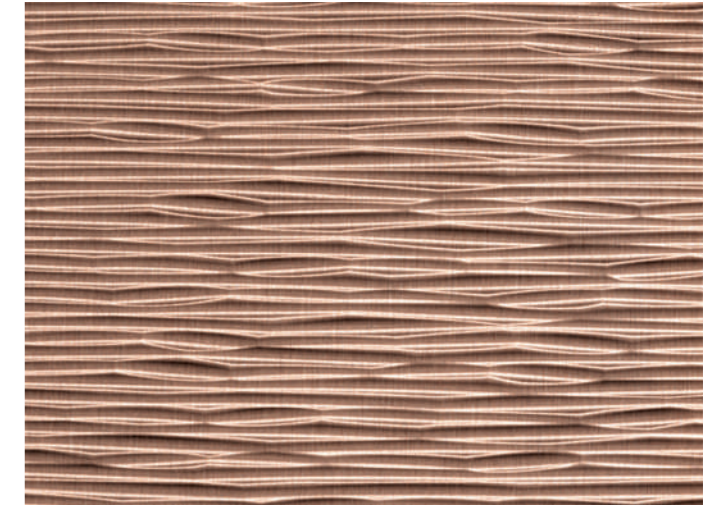
459/100 Alu Mesh Anthracite / Alu-Relief Mesh Anthrazit



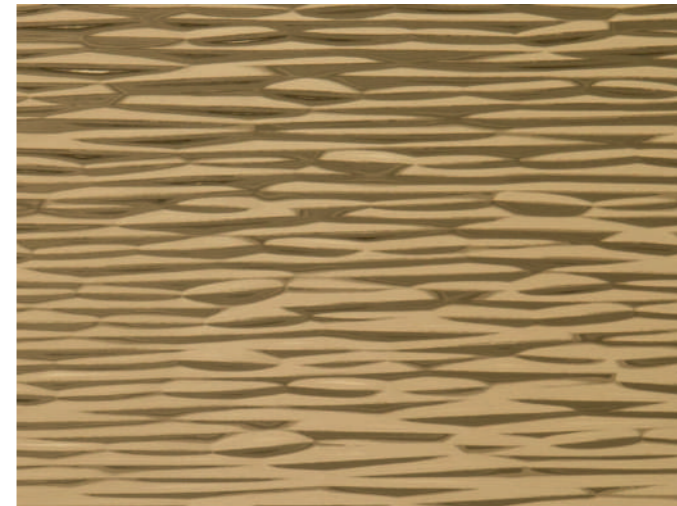
451/100 Alu Mesh Bronzestone / Alu-Relief Mesh Bronzeton



477/966 Alu Mirror Polished Cella Coppertone / Alu-Spiegelglanz Cella Kupferton



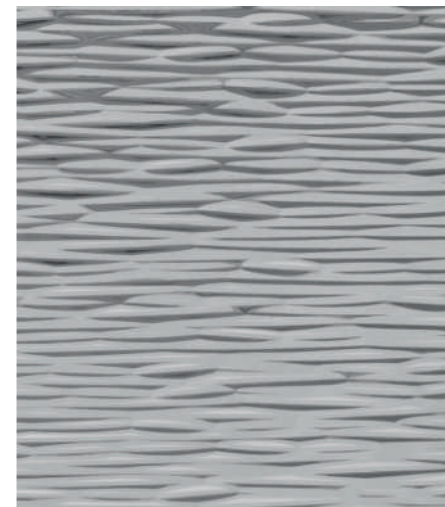
447/966 Alu Cella Coppertone / Alu-Relief Cella Kupferton



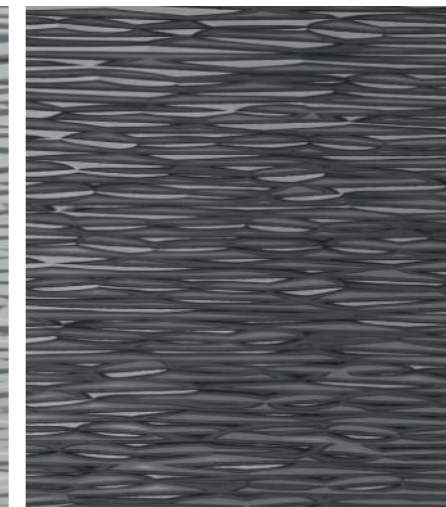
471/966 Alu Mirror Polished Cella Goldtone / Alu-Spiegelglanz Cella Goldton



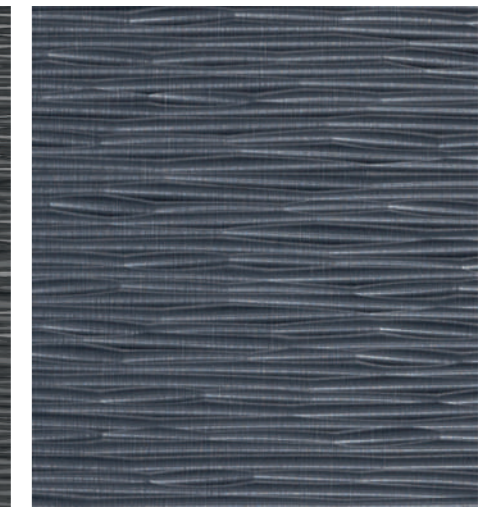
704/966 Alu Cella Goldtone / Alu-Relief Cella Goldton



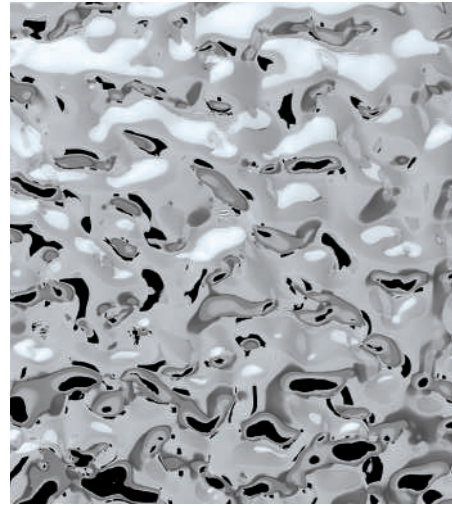
470/966 Alu Mirror Polished Cella Natural / Alu-Spiegelglanz Cella Naturton



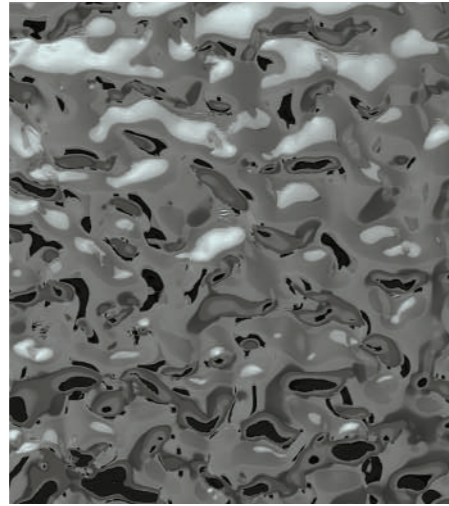
474/966 Alu Mirror Polished Cella Smokey Grey / Alu-Spiegelglanz Cella Smokey Grey



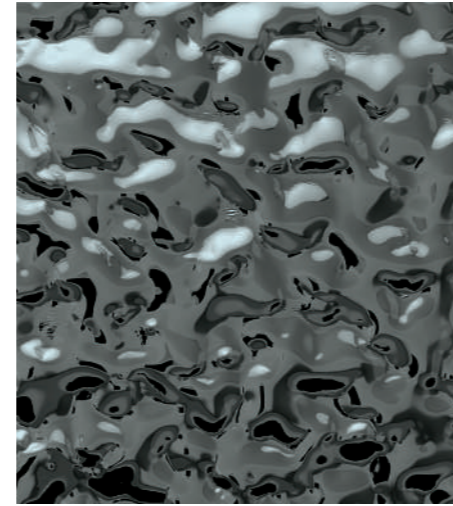
448/966 Alu Cella Black / Alu-Relief Cella Schwarz



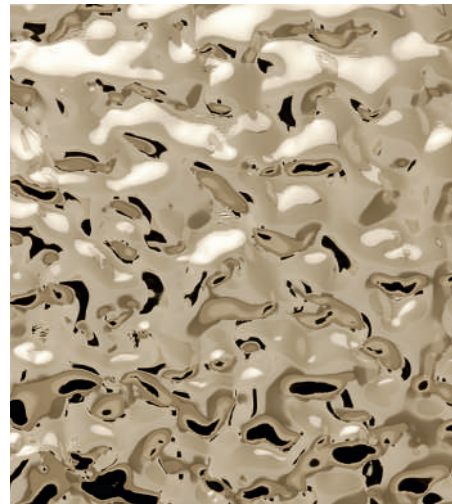
470/636 Alu Mirror Polished Lava Natural  
Alu-Spiegelglanz Lava Naturton



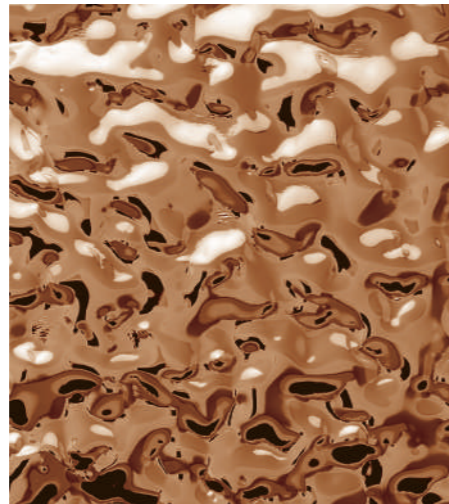
475/636 Alu Plain Polished Lava Gunmetal Matt  
Alu-Gebürstet Lava Gunmetal Matt



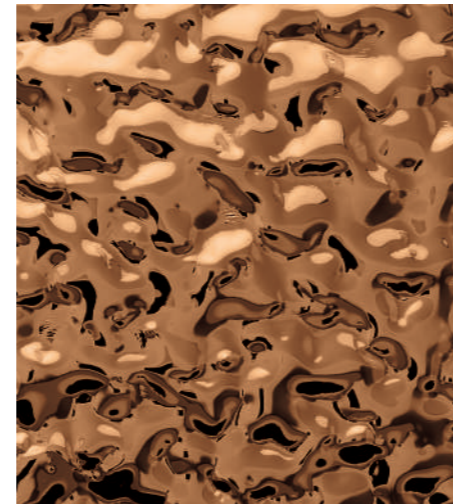
474/636 Alu Mirror Polished Lava Smokey Grey  
Alu-Spiegelglanz Lava Smokey Grey



471/636 Alu Mirror Polished Lava Goldton  
Alu-Spiegelglanz Lava Goldton



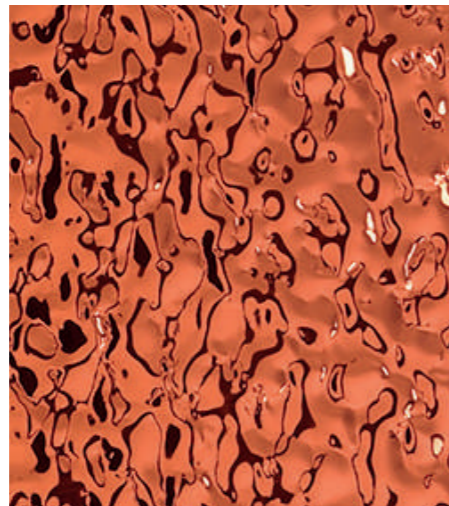
477/636 Alu Mirror Polished Lava Coppertone  
Alu-Spiegelglanz Lava Kupfertone



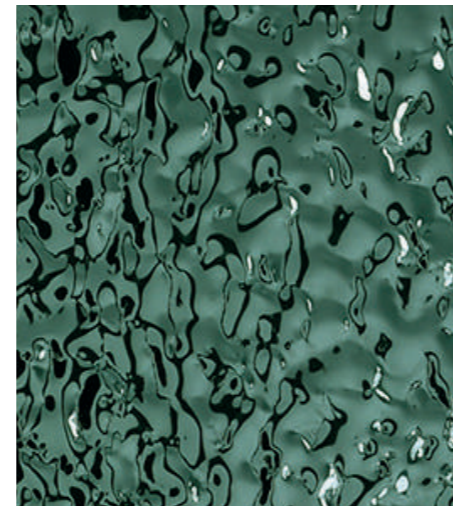
473/636 Alu Mirror Polished Lava Tea  
Alu-Spiegelglanz Lava Tea



472/636 Alu Mirror Polished Lava Solar Glow ✦  
Alu-Spiegelglanz Lava Solar Glow



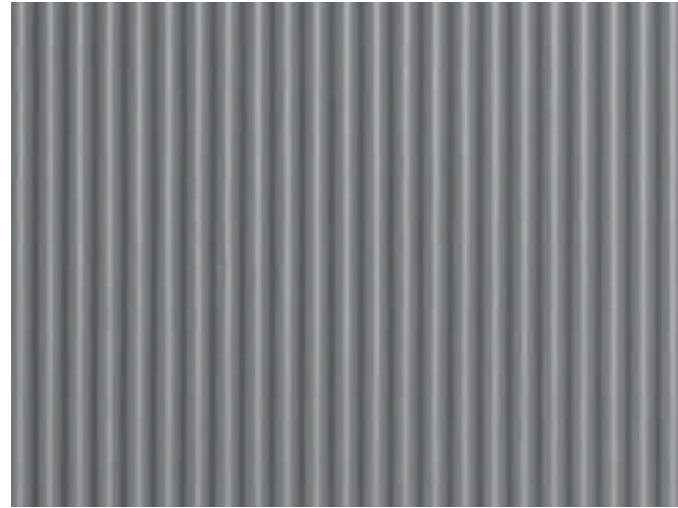
478/636 Alu Plain Polished Lava Clay Jar ✦  
Alu-Spiegelglanz Lava Clay Jar



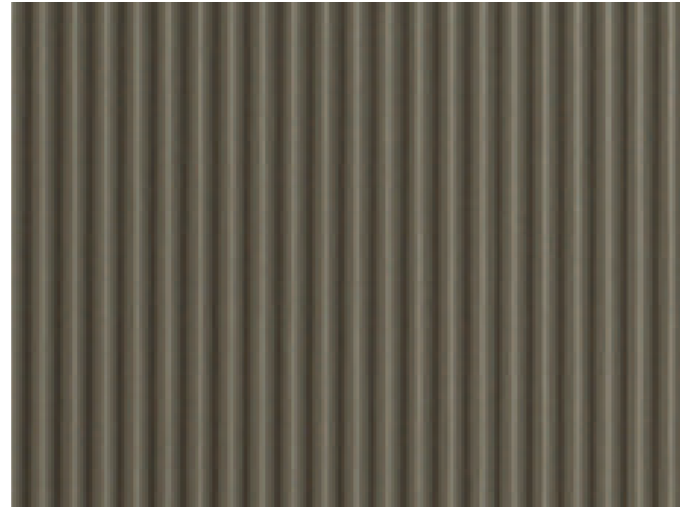
476/636 Alu Mirror Polished Lava Moss Green ✦  
Alu-Spiegelglanz Lava Moss Green



• 470/636 Alu Mirror Polished Lava Natural / Alu-Spiegelglanz Lava Naturton  
photo credits: Nicolò Panzeri for ERIS/Studio Pesca



444/780 Alu Plain Polished Tuet Natural / Alu-Gebürstet Tuet Naturton ✦



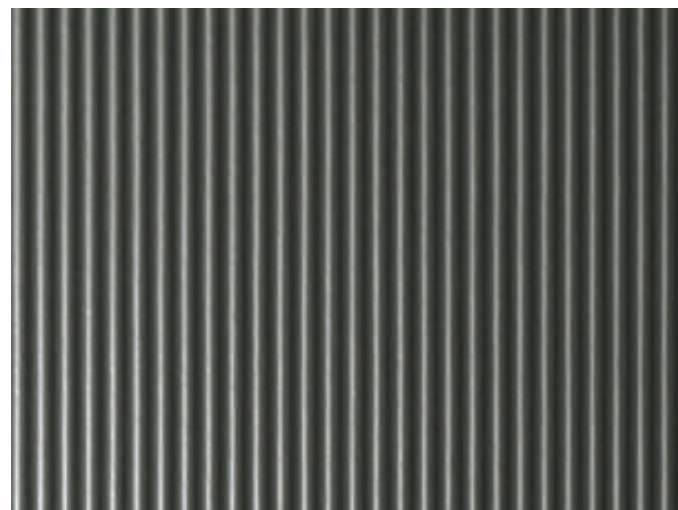
365/780 Alu Plain Polished Tuet Bronzeton / Alu-Gebürstet Tuet Bronzeton ✦



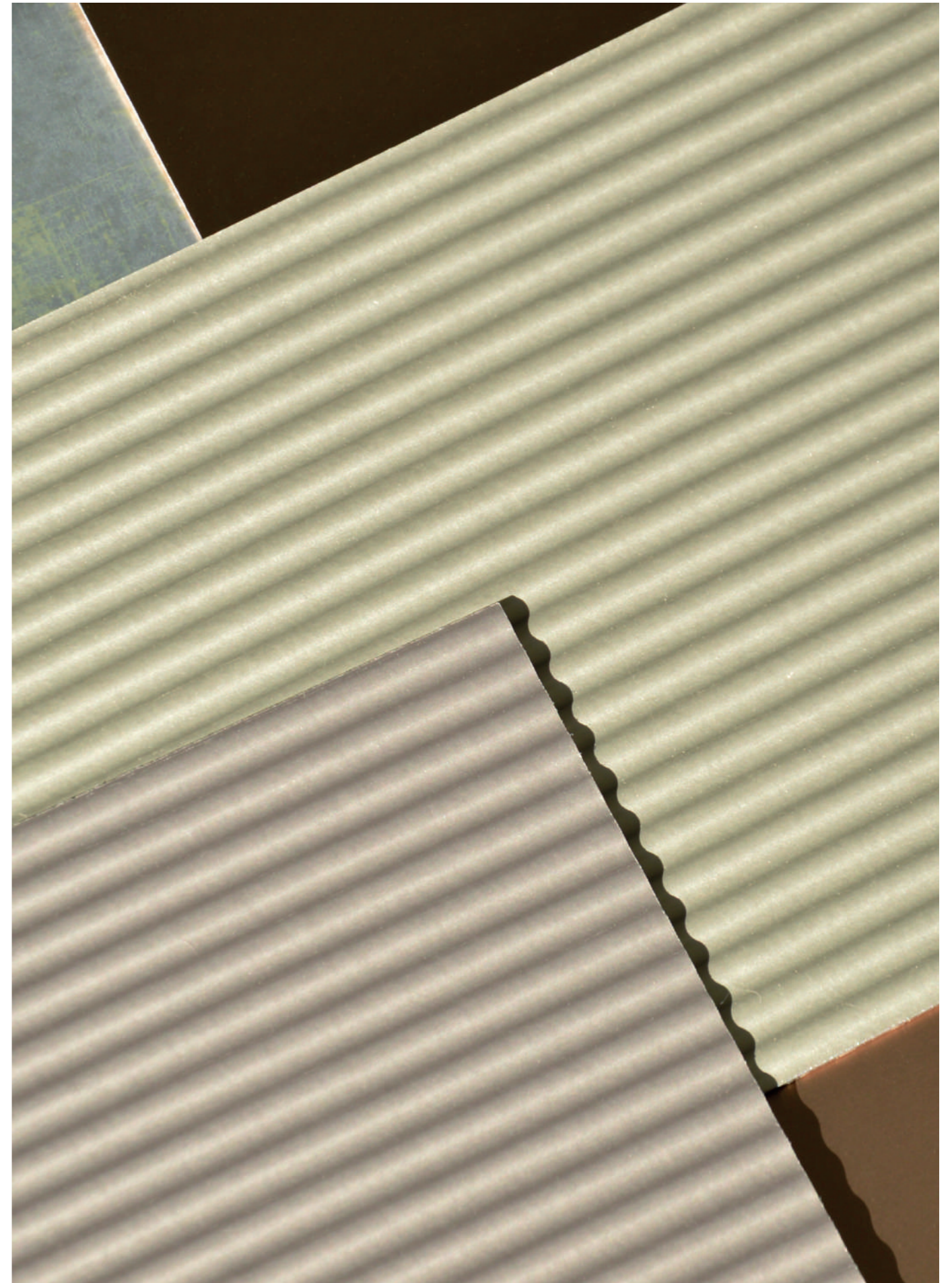
342/780 Alu Plain Polished Tuet Goldton / Alu-Gebürstet Tuet Goldton ✦



347/780 Alu Plain Polished Tuet Copperton / Alu-Gebürstet Tuet Kupfertone ✦



369/780 Alu Plain Polished Tuet Anthracite / Alu-Gebürstet Tuet Anthrazit ✦



\* vertical joint at about 610 mm  
Stoßfuge bei Breite von ca. 610 mm



690/340 Copper Diamond Antique  
Kupfer Diamond Antique



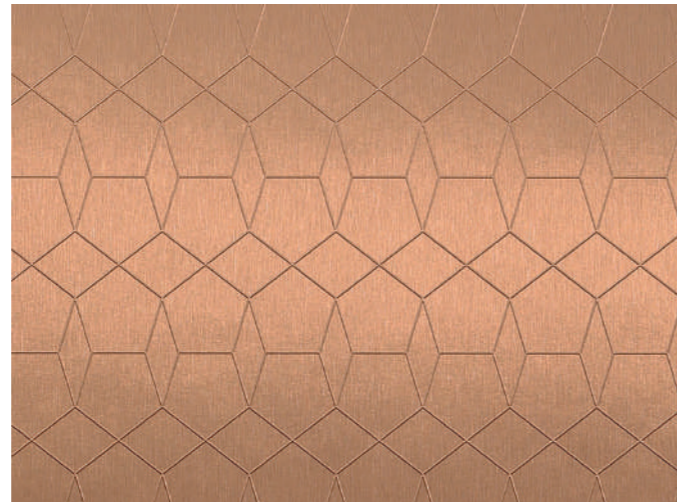
807/340 Alu Diamond Bronzeton  
Alu-Relief Diamond Bronzeton



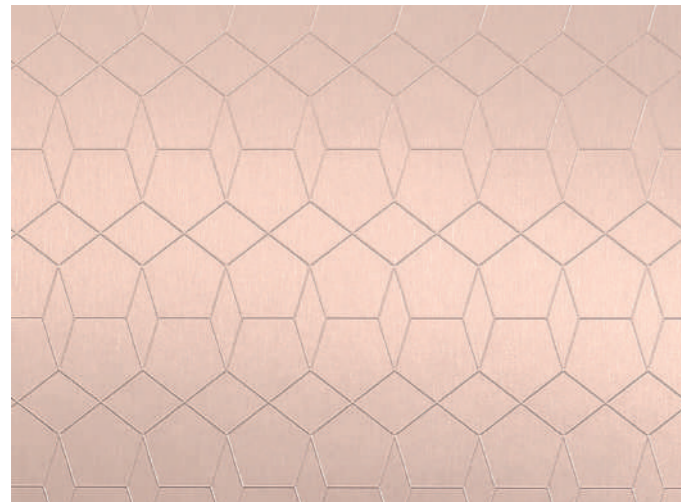
500/340 Brass Diamond Antique  
Messing Diamond Antique \*



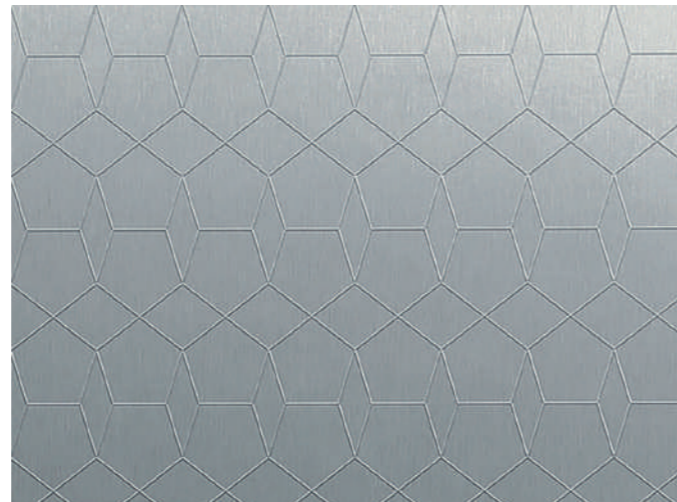
325/360 Alu Brushed Sapphire Champagne  
Alu-Strichmatt Sapphire Champagnerton



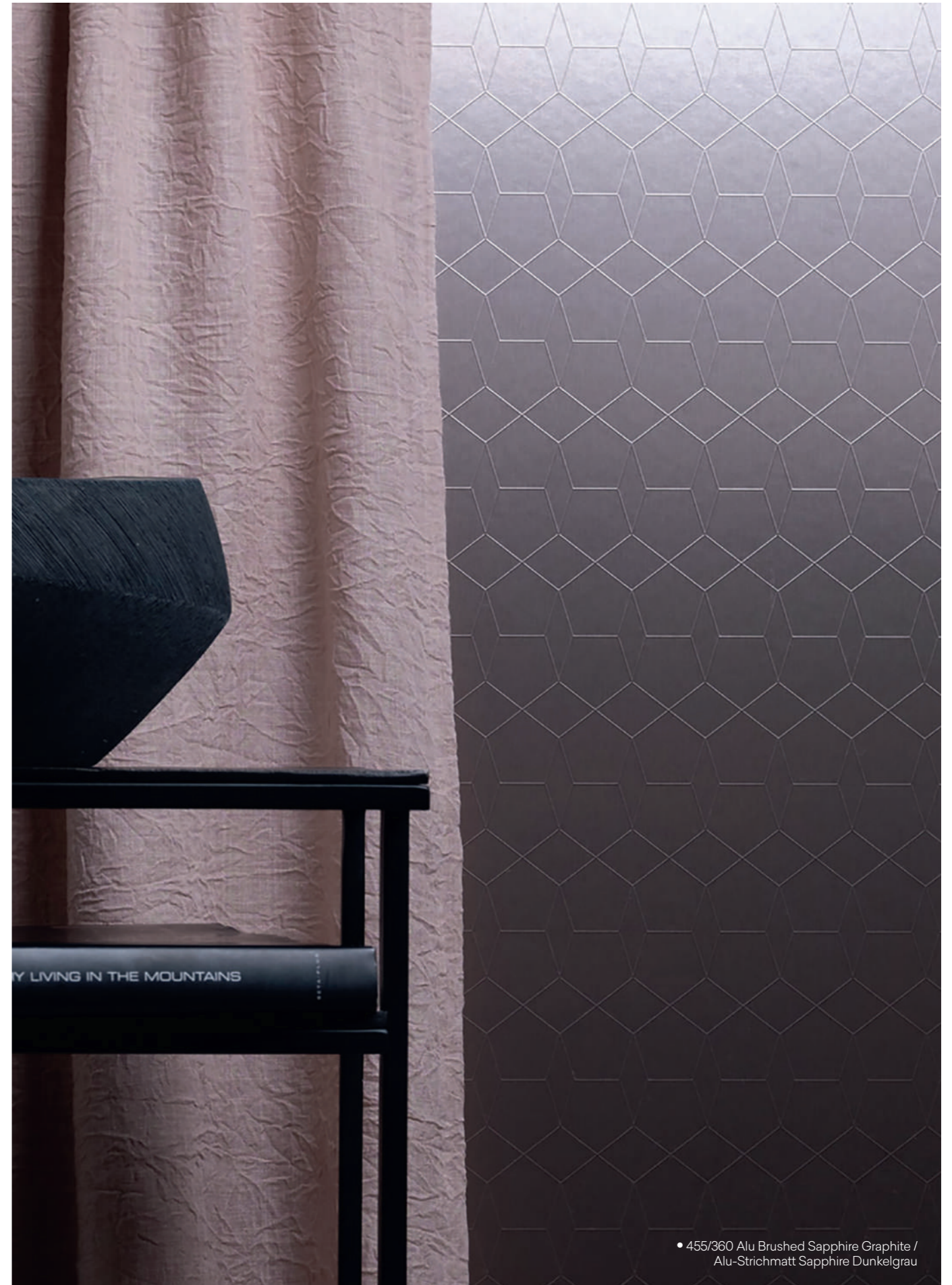
451/360 Alu Brushed Sapphire Bronzeton  
Alu-Strichmatt Sapphire Bronzeton



454/360 Alu Brushed Sapphire Rosegold  
Alu-Strichmatt Sapphire Rosé Gold



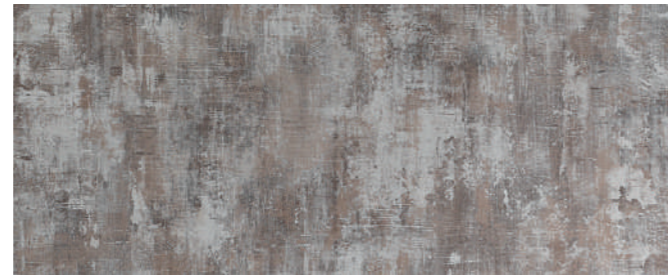
455/360 Alu Brushed Sapphire Graphite  
Alu-Strichmatt Sapphire Dunkelgrau



• 455/360 Alu Brushed Sapphire Graphite /  
Alu-Strichmatt Sapphire Dunkelgrau



M6813 Metallic Brass ✦



M6815 Metallic Copper ✦



M6811 Metallic Gray ✦



M6814 Metallic Black ✦



444/920N Alu Riffel Horizontal Natural / Alu-Relief Riffel „quer“ Naturton



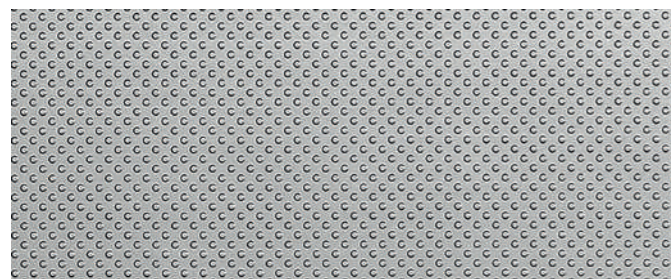
469/920N Alu Riffel Horizontal Anthracite / Alu-Relief Riffel „quer“ Anthrazit



446/920 Alu Riffel Horizontal Steeltone / Alu-Relief Riffel „quer“ Stahlton



641/000 Stainless Steel Brushed / Edelstahl Gebürstet



856 Alu Dots Steeltone / Alu-Relief Dots Stahlton



- 641/000 Stainless Steel Brushed/Edelstahl Gebürstet
- 470 Alu Mirror Polished Superior Natural/ Alu-Spiegelglanz Naturton Superior



# SRM

## Scratch Resistant Matt



EN

The **Scratch Resistant Matt (SRM)** collection is designed for vertical and horizontal applications. This makes it ideal for use in trade fair and shopfitting environments, kitchen and furniture fronts, tables in bars and restaurants, office work surfaces, and a wide range of contract settings, such as hotels. A special manufacturing process creates the super-matt finish with anti-fingerprint properties and a distinctive depth effect. The result is an exceptionally abrasion-resistant surface featuring uniform, durable structures of the highest quality. In tune with contemporary design trends, SRM surfaces are available in a selection of on-trend decors, textures, and colours, offering both aesthetic appeal and lasting performance.

**Scratch resistance. Soft touch.  
Ultra matt. Anti-fingerprint.  
A surface that proves its durability in interior applications subject to frequent use.**

DE

Die Kollektion **Scratch Resistant Matt (SRM)** ist für vertikale und horizontale Anwendungen konzipiert. Dadurch eignet sie sich ideal für den Einsatz in Messe- und Ladeneinrichtungen, als Theken und Tische in Bars und Restaurants, Möbel- und Küchenfronten, Büroarbeitsflächen sowie für eine Vielzahl von Objektbereichen wie Hotels. Ein spezielles Herstellungsverfahren erzeugt die supermatte Oberfläche mit Anti-Fingerprint-Eigenschaften und einem markanten Tiefeneffekt. Das Ergebnis ist eine außergewöhnlich abriebfeste Oberfläche mit gleichmäßigen, langlebigen Strukturen höchster Qualität. Entsprechend den aktuellen Designtrends sind SRM-Oberflächen in einer Auswahl an trendigen Dekoren, Texturen und Farben erhältlich und bieten sowohl ästhetische Attraktivität als auch dauerhafte Leistung.

**Kratzfest. Angenehm weich.  
Ultramatt. Anti-Fingerprint.  
Eine Oberfläche, die ihre Langlebigkeit in Innenräumen unter Beweis stellt, die einer häufigen Nutzung ausgesetzt sind.**

# Homapal Metals – SRM Scratch Resistant Matt



820/000 SRM Alu Softmatt Natural SRM  
Alu-Gebürstet Softmatt Naturton SRM



441 SRM Alu Brushed Natural SRM  
Alu-Strichmatt Naturton SRM



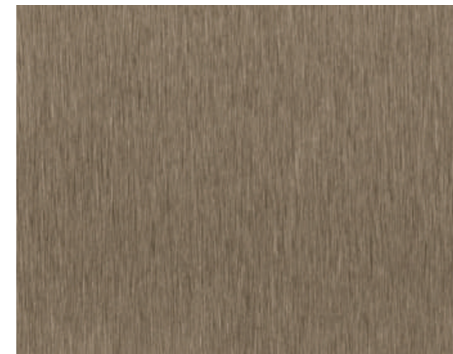
444N SRM Alu Plain Polished Natural SRM  
Alu-Gebürstet Naturton SRM



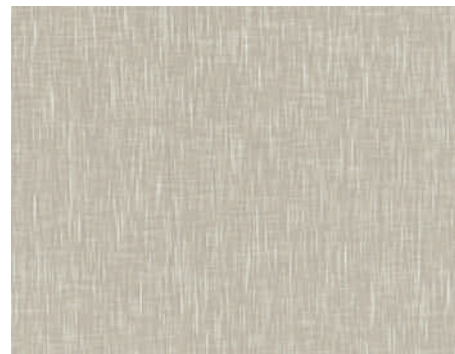
454 SRM Alu Brushed Rosegold SRM  
Alu-Strichmatt Rosé Gold SRM



447 SRM Alu Brushed Coppertone SRM  
Alu-Strichmatt Kupfertone SRM



451 SRM Alu Brushed Bronzestone SR  
Alu-Strichmatt Bronzeton SRM



325 SRM Alu Brushed Champagne SRM  
Alu-Strichmatt Champagnerton SRM



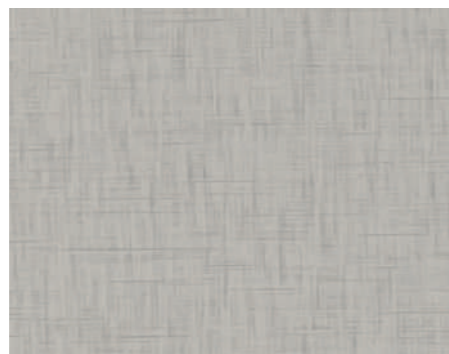
456 SRM Alu Brushed Medium Bronzestone SRM  
Alu-Strichmatt Bronzeton Medium SRM



446 SRM Alu Brushed Steeltone SRM  
Alu-Strichmatt Stahlton SRM



455/000 SRM Alu Brushed Graphite SRM  
Alu-Strichmatt Dunkelgrau SRM



431 SRM Alu Crossbrushed Natural SRM  
Alu-Kreuzstrichmatt Naturton SRM



439 SRM Alu Crossbrushed Brownish Grey SRM  
Alu-Kreuzstrichmatt Taupe SRM

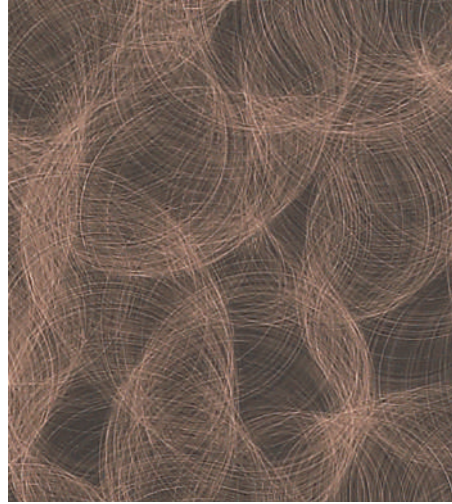


• 456 SRM Alu Brushed Medium Bronzestone SRM / Alu-Strichmatt Bronzeton Medium SRM  
planner/fabricator: Hüser-Michels GmbH

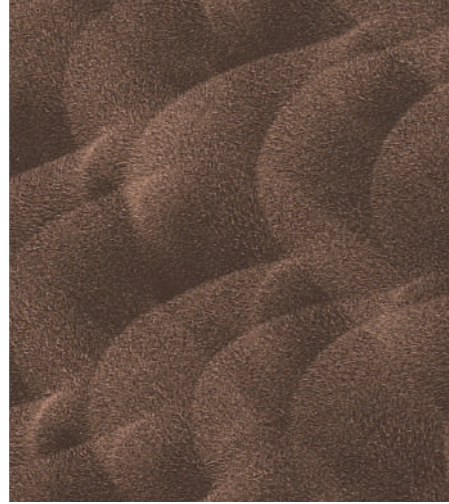
In a constant seek of continuous improvement of the quality of our products, we reserve the right to change the surface characteristics of the SRM collection without prior notice.

# Homapal Metals – SRM Scratch Resistant Matt

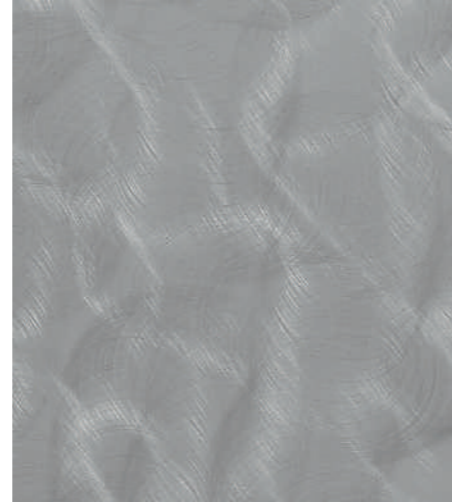
\* vertical joint at about 610 mm  
Stoßfuge bei Breite von ca. 610 mm



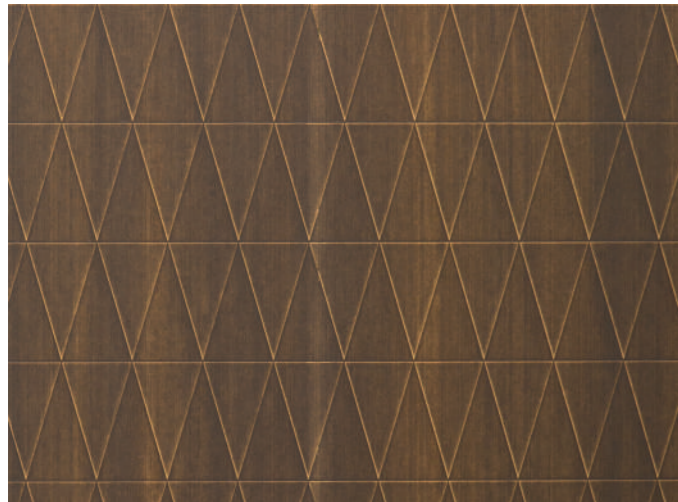
401/200 SRM Copper Crush SRM  
Kupfer-Glatt Crush SRM



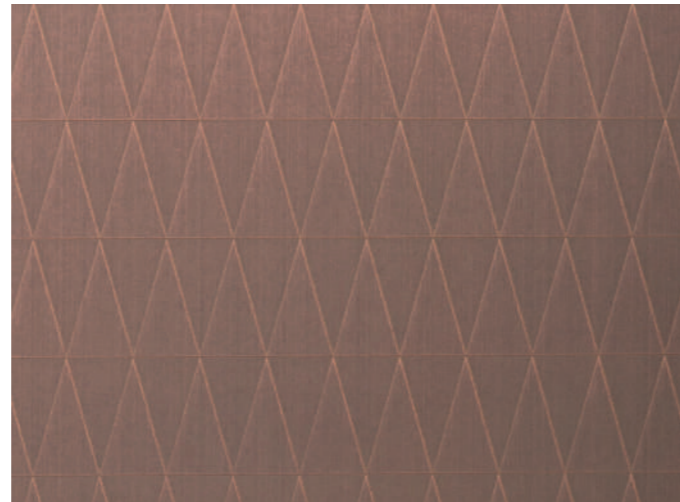
401/229 SRM Copper Crush Stipple SRM  
Kupfer-Glatt Crush Stipple SRM



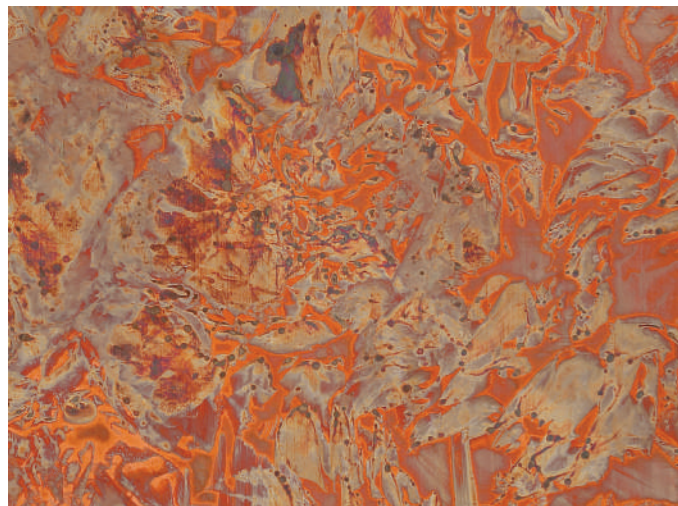
800/200 SRM Alu Crush SRM  
Alu-Glatt Crush SRM



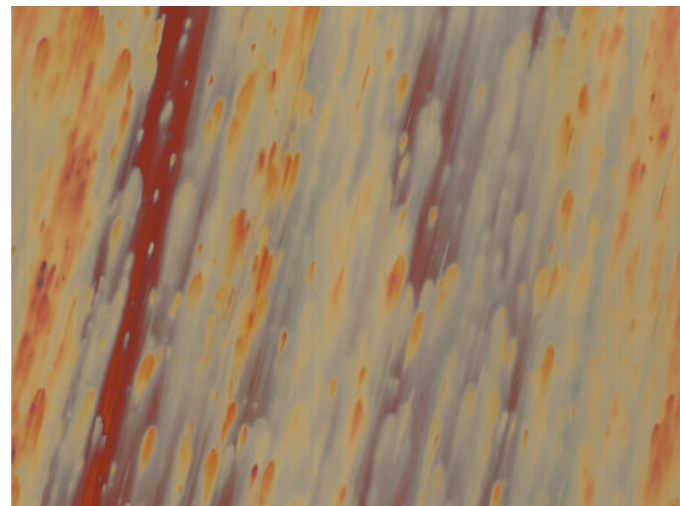
500/340 SRM Brass Diamond Antique SRM / Messing Diamond Antique SRM \*



690/340 SRM Copper Diamond Antique SRM / Kupfer Diamond Antique SRM



490 SRM Copper Antique SRM / Kupfer-Glatt Antik SRM



695D SRM Copper Stratos Diagonal SRM / Kupfer-Glatt Stratos Diagonal SRM



• 490 SRM Copper Antique SRM / Kupfer-Glatt Antik SRM

In a constant seek of continuous improvement of the quality of our products, we reserve the right to change the surface characteristics of the SRM collection without prior notice.

# Magnetic & Boards Communicating Surfaces



EN

The **Magnetic & Boards** collection combines elegant design with practical functionality. In addition to having a high magnetic effect, most surfaces can also be written on using standard board markers or chalk. They can be easily wiped clean at any time without leaving any residue (refer to our latest guidelines available on our website). Surfaces feature a high magnetic effect because of an iron foil embedded in the laminate. This allows you to attach not only lightweight documents and utensils to the wall, but also heavier magnetic shelves. These are ideal for shopfitting displays, workplace tools, or modular rails and shelves to hold small appliances or kitchen spices, for example.

**High magnetic power combined with write-on surfaces. Available in a wide range of basic and fashionable colours.**

DE

Die Kollektion **Magnetic & Boards** vereint elegantes Design mit praktischer Funktionalität. Die Oberflächen sind nicht nur stark magnethaftend, sondern lassen sich auch mit handelsüblichen Whiteboard-Markern oder Kreide beschreiben. Sie können jederzeit rückstandslos abgewischt werden (nähere Informationen finden Sie in unseren aktuellen technischen Richtlinien auf unserer Webseite). Die hohe Magnetkraft der Oberflächen wird durch eine in das Laminat eingebettete Eisenfolie erzielt. So können Sie nicht nur leichte Dokumente und Utensilien, sondern auch schwerere Magnetregale an der Wand befestigen. Diese eignen sich ideal für Ladeneinrichtungen, Werkzeuge am Arbeitsplatz oder modulare Schienen und Regale zur Aufbewahrung von kleinen Haushaltsgeräten oder Küchengewürzen.

**Hohe Magnetkraft kombiniert mit beschreibbaren Oberflächen. Erhältlich in einer breiten Auswahl an klassischen und modischen Farben.**

• 8205 Magnetic Board Black Matt (chalk) / Magnethaftplatte Schwarz Matt (Kreide)



**8207** Magnetic Board White Matt (projection and board marker)  
Magnetaftplatte Weiß Matt (Projektionsfläche und Boardmarker)



**8206** Magnetic Board White Glossy (board marker)  
Magnetaftplatte Weiß Glänzend (Boardmarker)



**8211** Magnetic Board Green Matt (chalk)  
Magnetaftplatte Grün Matt (Kreide)



**8214** Magnetic Board Smokey Blue Matt (chalk)  
Magnetaftplatte Rauchblau Matt (Kreide)



**8202** Magnetic Board White Glossy with grid points (board marker)  
Magnetaftplatte Weiß Glänzend mit Rasterpunkten (Boardmarker)



**8208** Magnetic Board Light Grey Glossy (board marker)  
Magnetaftplatte Hellgrau Glänzend (Boardmarker)



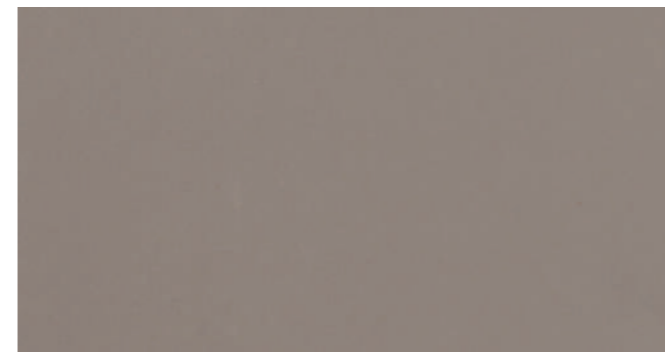
**8253** Magnetic Board Wine Red Matt (chalk)  
Magnetaftplatte Weinrot Matt (Kreide)



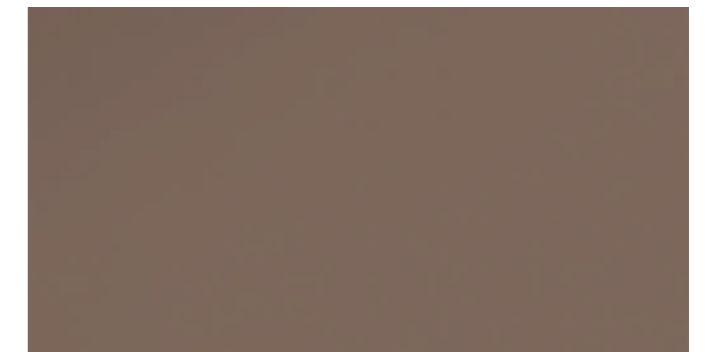
**8276** Magnetic Board Curry Matt (chalk)  
Magnetaftplatte Curry Matt (Kreide)



**8277** Magnetic Board Curry Glossy (board marker)  
Magnetaftplatte Curry Glänzend (Boardmarker)



**8234** Magnetic Board Macchiato Matt (chalk)  
Magnetaftplatte Macchiato Matt (Kreide)



**8233** Magnetic Board Macchiato Glossy (board marker)  
Magnetaftplatte Macchiato Glänzend (Boardmarker)



**8259** Magnetic Board Apple Green Matt (chalk)  
Magnetaftplatte Apfelgrün Matt (Kreide)



**8232** Magnetic Board Apple Green Glossy (board marker)  
Magnetaftplatte Apfelgrün Glänzend (Boardmarker)



**8225** Magnetic Board Stone Grey Matt (chalk)  
Magnetaftplatte Steingrau Matt (Kreide)



**8224** Magnetic Board Stone Grey Glossy (board marker)  
Magnetaftplatte Steingrau Glänzend (Boardmarker)

# Homapal – Magnetic & Boards

\* without magnetic effect  
ohne Magnethaftkraft



8231 Magnetic Board Alu Crossbrushed Natural  
Magnethaftplatte Alu Kreuzstrichmatt



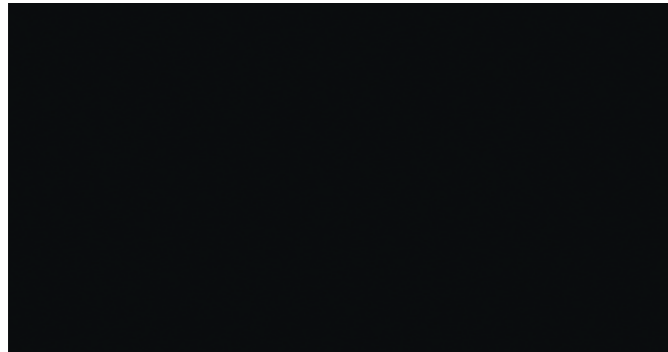
8200 Magnetic Board for individual finish  
Magnethaftplatte beidseitig geschliffen



8205 Magnetic Board Black Matt (chalk)  
Magnethaftplatte Schwarz Matt (Kreide)



8267 Magnetic Board Slate Black  
Magnethaftplatte Schiefer Schwarz



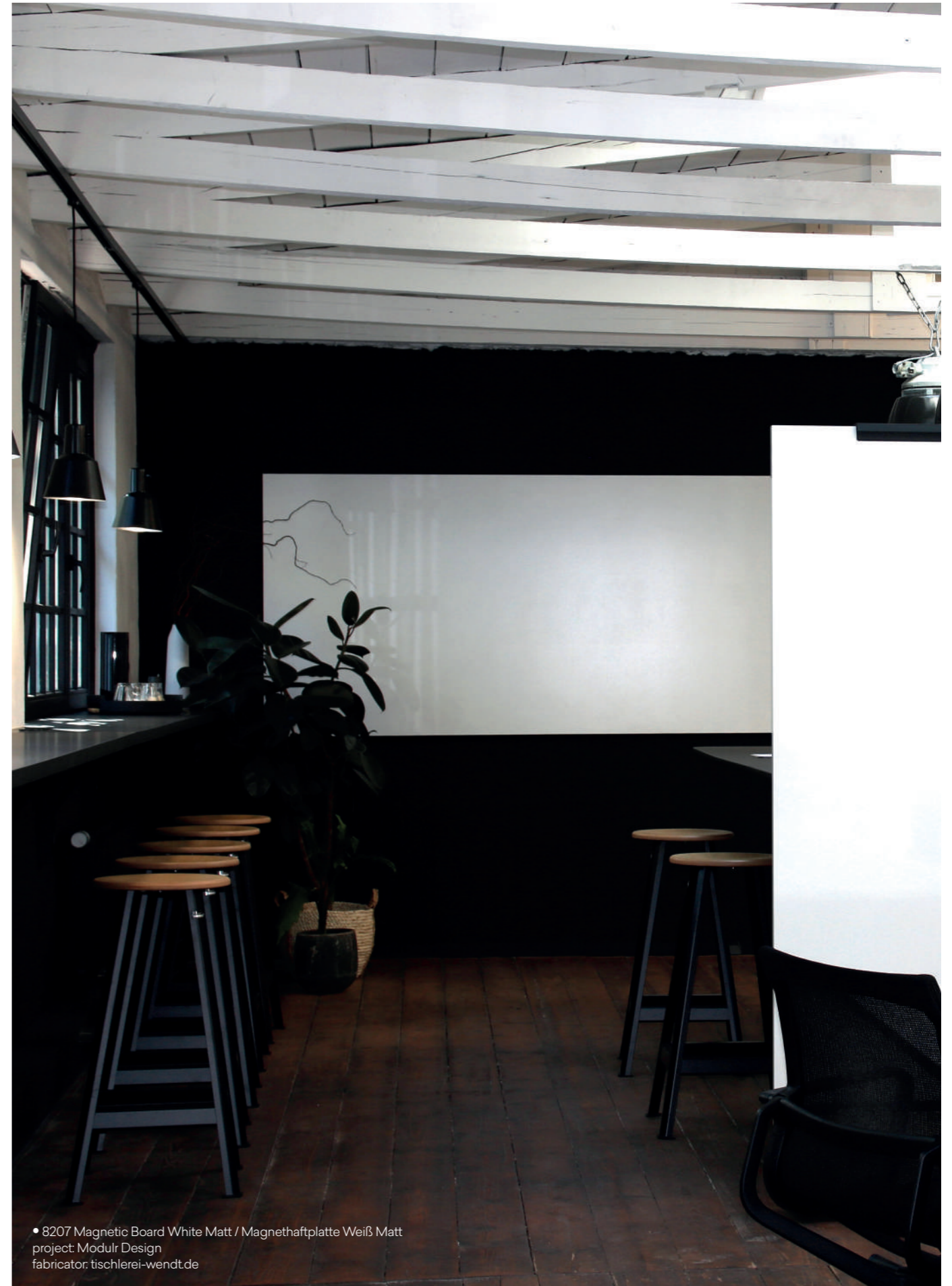
205/000U Melamine Black Matt (chalk)  
Melamin Schwarz Matt (Kreide) \*



205 Melamine Slate Black  
Melamin Schiefer Schwarz \*



211/000U Melamine Green Matt (chalk)  
Melamin Grün Matt (Kreide) \*



• 8207 Magnetic Board White Matt / Magnethaftplatte Weiß Matt  
project: Modulr Design  
fabricator: tischlerei-wendt.de



LIST OF DECORS / DEKORÜBERSICHT

✦ New  
Neu

| Homapal Code<br>Homapal Code | Decor Name<br>Dekor Name   | Range<br>Kategorie      | Thickness<br>Dicke | Size<br>Format | Balancer<br>Gegenzug |
|------------------------------|--|-------------------------|--------------------|----------------|----------------------|
| 205                          | Melamine Slate Black (without magnetic effect)<br>Melamin Schiefer Schwarz (ohne Magnethaftkraft)                        | Magnetic & Boards       | 1.0                | a, b           | 012                  |
| 205/000U                     | Melamine Black Matt / chalk (without magnetic effect)<br>Melamin Schwarz Matt / Kreide (ohne Magnethaftkraft)            | Magnetic & Boards       | 1.0                | a, b           | 012                  |
| 211/000U                     | Melamine Green Matt / chalk (without magnetic effect)<br>Melamin Grün Matt / Kreide (ohne Magnethaftkraft)               | Magnetic & Boards       | 1.0                | b              | 012                  |
| 325                          | Alu Brushed Champagne<br>Alu-Strichmatt Champagnerton  | Elements                | 1.0                | a, b           | 001                  |
| 325 SRM                      | Alu Brushed Champagne SRM<br>Alu-Strichmatt Champagnerton SRM  | SRM                     | 1.0                | a, b           | 001 SR               |
| 325/360                      | Alu Brushed Sapphire Champagne<br>Alu-Strichmatt Sapphire Champagnerton  | Perspectives/Geometries | 1.0                | a, b           | 001                  |
| 342/000                      | Alu Plain Polished Goldtone<br>Alu-Gebürstet Goldton   | Elements                | 1.0                | a, b           | 001                  |
| 342/780                      | Alu Plain Polished Tuet Goldtone ✦<br>Alu-Gebürstet Tuet Goldton   | Perspectives/Depths     | 1.8                | a, b           | 006                  |
| 347/000                      | Alu Plain Polished Coppertone<br>Alu-Gebürstet Kupfer-ton  | Elements                | 1.0                | a, b           | 001                  |
| 347/780                      | Alu Plain Polished Tuet Coppertone ✦<br>Alu-Gebürstet Tuet Kupfer-ton  | Perspectives/Depths     | 1.8                | a, b           | 006                  |
| 351                          | Alu Plain Polished Solar Glow ✦<br>Alu-Gebürstet Solar Glow  | Elements                | 1.0                | a, b           | 001                  |
| 353                          | Alu Plain Polished Clay Jar ✦<br>Alu-Gebürstet Clay Jar  | Elements                | 1.0                | a, b           | 001                  |
| 359                          | Alu Plain Polished Moss Green ✦<br>Alu-Gebürstet Moss Green  | Elements                | 1.0                | a, b           | 001                  |
| 365/780                      | Alu Plain Polished Tuet Bronzestone ✦<br>Alu-Gebürstet Tuet Bronzeton  | Perspectives/Depths     | 1.8                | a, b           | 006                  |
| 369/780                      | Alu Plain Polished Tuet Anthracite ✦<br>Alu-Gebürstet Tuet Anthrazit   | Perspectives/Depths     | 1.8                | a, b           | 006                  |
| 401/200                      | Copper Crush<br>Kupfer-Glatt Crush   | Gestures                | 1.3                | a, b           | 009                  |
| 401/200 SRM                  | Copper Crush SRM<br>Kupfer-Glatt Crush SRM   | SRM                     | 1.3                | a, b           | 009 SR               |
| 401/229                      | Copper Crush Stipple<br>Kupfer-Glatt Crush Stipple   | Gestures                | 1.3                | a, b           | 009                  |
| 401/229 SRM                  | Copper Crush Stipple SRM<br>Kupfer-Glatt Crush Stipple SRM   | SRM                     | 1.3                | a, b           | 009 SR               |
| 409/000                      | Alu Brushed Steeltone - Industrial quality version of 446<br>Alu-Strichmatt Stahlton - Industrie Qualität des Dekors 446 | Elements                | 0.8                | a, b           | 001                  |
| 423/980                      | Alu Plex Stainless Steeltone<br>Alu-Relief Plex Edelstahlton   | Elements                | 1.0                | a, b           | 001                  |
| 431                          | Alu Crossbrushed Natural<br>Alu-Kreuzstrichmatt Naturton   | Elements                | 1.0                | a, b           | 001                  |
| 431 SRM                      | Alu Crossbrushed Natural SRM<br>Alu-Kreuzstrichmatt Naturton SRM   | SRM                     | 1.0                | a, b           | 001 SR               |
| 433                          | Alu Crossbrushed Stainless Steeltone<br>Alu-Kreuzstrichmatt Edelstahlton   | Elements                | 1.0                | a, b           | 001                  |
| 434                          | Alu Crossbrushed Goldtone<br>Alu-Kreuzstrichmatt Goldton   | Elements                | 1.0                | a, b           | 001                  |
| 437                          | Alu Crossbrushed Coppertone<br>Alu-Kreuzstrichmatt Kupfer-ton  | Elements                | 1.0                | a, b           | 001                  |
| 439                          | Alu Crossbrushed Brownish Grey<br>Alu-Kreuzstrichmatt Taupe  | Elements                | 1.0                | a, b           | 001                  |
| 439 SRM                      | Alu Crossbrushed Brownish Grey SRM<br>Alu-Kreuzstrichmatt Taupe SRM  | SRM                     | 1.0                | a, b           | 001 SR               |
| 441                          | Alu Brushed Natural<br>Alu-Strichmatt Naturton   | Elements                | 1.0                | a, b, e        | 001                  |
| 441 SRM                      | Alu Brushed Natural SRM<br>Alu-Strichmatt Naturton SRM   | SRM                     | 1.0                | a, b           | 001 SR               |
| 442                          | Alu Brushed Goldtone<br>Alu-Strichmatt Goldton   | Elements                | 1.0                | a, b           | 001                  |
| 444/780                      | Alu Plain Polished Tuet Natural ✦<br>Alu-Gebürstet Tuet Naturton   | Perspectives/Depths     | 1.8                | a, b           | 006                  |

a = 2440 x 1220 mm  
b = 3050 x 1220 mm  
e = 3050 x 1300 mm

On request we will provide you with the Arpa and Formica code matrix. Please contact us.  
Auf Anfrage übersenden wir Ihnen gerne die zu den Homapal Dekoren korrespondierenden Arpa und Formica Dekornummern.

LIST OF DECORS / DEKORÜBERSICHT

| Homapal Code<br>Homapal Code | Decor Name<br>Dekor Name   | Range<br>Kategorie      | Thickness<br>Dicke | Size<br>Format | Balancer<br>Gegenzug |
|------------------------------|--|-------------------------|--------------------|----------------|----------------------|
| 444/920N                     | Alu Riffel Horizontal Natural<br>Alu-Relief Riffel „quer“ Naturton         | Perspectives/Industrial | 0.9                | a, b           | 001                  |
| 444N                         | Alu Plain Polished Natural<br>Alu-Gebürstet Naturton                       | Elements                | 1.0                | a, b           | 001                  |
| 444N SRM                     | Alu Plain Polished Natural SRM<br>Alu-Gebürstet Naturton SRM               | SRM                     | 1.0                | a, b           | 001 SR               |
| 446                          | Alu Brushed Steeltone<br>Alu-Strichmatt Stahlton                           | Elements                | 1.0                | a, b, e        | 001                  |
| 446 SRM                      | Alu Brushed Steeltone SRM<br>Alu-Strichmatt Stahlton SRM                   | SRM                     | 1.0                | a, b           | 001 SR               |
| 446/920                      | Alu Riffel Horizontal Steeltone<br>Alu-Relief Riffel „quer“ Stahlton       | Perspectives/Industrial | 0.9                | a, b           | 001                  |
| 447                          | Alu Brushed Coppertone<br>Alu-Strichmatt Kupfer-ton                        | Elements                | 1.0                | a, b           | 001                  |
| 447 SRM                      | Alu Brushed Coppertone SRM<br>Alu-Strichmatt Kupfer-ton SRM                | SRM                     | 1.0                | a, b           | 001 SR               |
| 447/966                      | Alu Cella Coppertone<br>Alu-Relief Cella Kupfer-ton                        | Perspectives/Depths     | 1.3                | a, b           | 002                  |
| 448                          | Alu Brushed Black<br>Alu-Strichmatt Schwarz                                | Elements                | 1.0                | a, b           | 001                  |
| 448/966                      | Alu Cella Black<br>Alu-Relief Cella Schwarz                                | Perspectives/Depths     | 1.3                | a, b           | 002                  |
| 451                          | Alu Brushed Bronzestone<br>Alu-Strichmatt Bronzeton                        | Elements                | 1.0                | a, b           | 001                  |
| 451 SRM                      | Alu Brushed Bronzestone SRM<br>Alu-Strichmatt Bronzeton SRM                | SRM                     | 1.0                | a, b           | 001 SR               |
| 451/100                      | Alu Mesh Bronzestone<br>Alu-Relief Mesh Bronzeton                          | Perspectives/Depths     | 1.3                | a, b           | 002                  |
| 451/360                      | Alu Brushed Sapphire Bronzestone<br>Alu-Strichmatt Sapphire Bronzeton      | Perspectives/Geometries | 1.0                | a, b           | 001                  |
| 454                          | Alu Brushed Rosegold<br>Alu-Strichmatt Rosé Gold                           | Elements                | 1.0                | a, b           | 001                  |
| 454 SRM                      | Alu Brushed Rosegold SRM<br>Alu-Strichmatt Rosé Gold SRM                   | SRM                     | 1.0                | a, b           | 001 SR               |
| 454/360                      | Alu Brushed Sapphire Rosegold<br>Alu-Strichmatt Sapphire Rosé Gold         | Perspectives/Geometries | 1.0                | a, b           | 001                  |
| 455/000 SRM                  | Alu Brushed Graphite SRM<br>Alu-Strichmatt Dunkelgrau SRM                  | SRM                     | 1.0                | a, b           | 001 SR               |
| 455/360                      | Alu Brushed Sapphire Graphite<br>Alu-Strichmatt Sapphire Dunkelgrau        | Perspectives/Geometries | 1.0                | a, b           | 001                  |
| 456                          | Alu Brushed Medium Bronzestone<br>Alu-Strichmatt Bronzeton Medium          | Elements                | 1.0                | a, b           | 001                  |
| 456 SRM                      | Alu Brushed Medium Bronzestone SRM<br>Alu-Strichmatt Bronzeton Medium SRM  | SRM                     | 1.0                | a, b           | 001 SR               |
| 459/100                      | Alu Mesh Anthracite<br>Alu-Relief Mesh Anthrazit                           | Perspectives/Depths     | 1.3                | a, b           | 002                  |
| 469/920N                     | Alu Riffel Horizontal Anthracite<br>Alu-Relief Riffel „quer“ Anthrazit     | Perspectives/Industrial | 0.9                | a, b           | 001                  |
| 470                          | Alu Mirror Polished Superior Natural<br>Alu-Spiegelglanz Naturton Superior | Elements                | 1.0                | a, b           | 005/015              |
| 470/100                      | Alu Mirror Polished Mesh Natural<br>Alu-Spiegelglanz Mesh Naturton         | Perspectives/Depths     | 1.3                | a              | 005/015              |
| 470/124                      | Alu Mirror Polished Cascade Natural<br>Alu-Spiegelglanz Cascade Naturton   | Perspectives/Depths     | 1.3                | a              | 005/015              |
| 470/636                      | Alu Mirror Polished Lava Natural<br>Alu-Spiegelglanz Lava Naturton         | Perspectives/Depths     | 1.3                | a              | 005/015              |
| 470/966                      | Alu Mirror Polished Cella Natural<br>Alu-Spiegelglanz Cella Naturton       | Perspectives/Depths     | 1.3                | a              | 005/015              |
| 471                          | Alu Mirror Polished Goldtone<br>Alu-Spiegelglanz Goldton                   | Elements                | 1.0                | a, b           | 005/015              |
| 471/100                      | Alu Mirror Polished Mesh Goldtone<br>Alu-Spiegelglanz Mesh Goldton         | Perspectives/Depths     | 1.3                | a              | 005/015              |
| 471/124                      | Alu Mirror Polished Cascade Goldtone<br>Alu-Spiegelglanz Cascade Goldton   | Perspectives/Depths     | 1.3                | a              | 005/015              |

a = 2440 x 1220 mm  
b = 3050 x 1220 mm  
e = 3050 x 1300 mm

On request we will provide you with the Arpa and Formica code matrix. Please contact us.  
Auf Anfrage übersenden wir Ihnen gerne die zu den Homapal Dekoren korrespondierenden Arpa und Formica Dekornummern.

LIST OF DECORS / DEKORÜBERSICHT

✦ New  
Neu

| Homapal Code<br>Homapal Code | Decor Name<br>Dekor Name   | Range<br>Kategorie      | Thickness<br>Dicke | Size<br>Format | Balancer<br>Gegenzug |
|------------------------------|--|-------------------------|--------------------|----------------|----------------------|
| 471/636                      | Alu Mirror Polished Lava Goldtone<br>Alu-Spiegelglanz Lava Goldton   | Perspectives/<br>Depths | 1.3                | a              | 005/015              |
| 471/966                      | Alu Mirror Polished Cella Goldtone<br>Alu-Spiegelglanz Cella Goldton   | Perspectives/<br>Depths | 1.3                | a              | 005/015              |
| 472                          | Alu Mirror Polished Solar Glow ✦<br>Alu-Spiegelglanz Solar Glow  | Elements                | 1.0                | a, b           | 005/015              |
| 472/636                      | Alu Mirror Polished Lava Solar Glow ✦<br>Alu-Spiegelglanz Lava Solar Glow  | Perspectives/Depths     | 1.3                | a              | 005/015              |
| 473                          | Alu Mirror Polished Tea<br>Alu-Spiegelglanz Tea  | Elements                | 1.0                | a, b           | 005/015              |
| 473/124                      | Alu Mirror Polished Cascade Tea<br>Alu-Spiegelglanz Cascade Tea  | Perspectives/<br>Depths | 1.3                | a              | 005/015              |
| 473/636                      | Alu Mirror Polished Lava Tea<br>Alu-Spiegelglanz Lava Tea  | Perspectives/<br>Depths | 1.3                | a              | 005/015              |
| 474                          | Alu Mirror Polished Smokey Grey<br>Alu-Spiegelglanz Smokey Grey  | Elements                | 1.0                | a, b           | 005/015              |
| 474/124                      | Alu Mirror Polished Cascade Smokey Grey<br>Alu-Spiegelglanz Cascade Smokey Grey  | Perspectives/<br>Depths | 1.3                | a              | 005/015              |
| 474/636                      | Alu Mirror Polished Lava Smokey Grey<br>Alu-Spiegelglanz Lava Smokey Grey  | Perspectives/<br>Depths | 1.3                | a              | 005/015              |
| 474/966                      | Alu Mirror Polished Cella Smokey Grey<br>Alu-Spiegelglanz Cella Smokey Grey  | Perspectives/<br>Depths | 1.3                | a              | 005/015              |
| 475/000                      | Alu Plain Polished Gunmetal Matt<br>Alu-Gebürstet Gunmetal Matt  | Elements                | 1.0                | a, b           | 005/015              |
| 475/636                      | Alu Plain Polished Lava Gunmetal Matt<br>Alu-Gebürstet Lava Gunmetal Matt  | Perspectives/<br>Depths | 1.3                | a              | 005/015              |
| 476                          | Alu Mirror Polished Moss Green ✦<br>Alu-Spiegelglanz Moss Green  | Elements                | 1.0                | a, b           | 005/015              |
| 476/636                      | Alu Mirror Polished Lava Moss Green ✦<br>Alu-Spiegelglanz Lava Moss Green  | Perspectives/Depths     | 1.3                | a              | 005/015              |
| 477                          | Alu Mirror Polished Coppertone<br>Alu-Spiegelglanz Kupferton   | Elements                | 1.0                | a, b           | 005/015              |
| 477/124                      | Alu Mirror Polished Cascade Coppertone<br>Alu-Spiegelglanz Cascade Kupferton   | Perspectives/<br>Depths | 1.3                | a              | 005/015              |
| 477/636                      | Alu Mirror Polished Lava Coppertone<br>Alu-Spiegelglanz Lava Kupferton   | Perspectives/<br>Depths | 1.3                | a              | 005/015              |
| 477/966                      | Alu Mirror Polished Cella Coppertone<br>Alu-Spiegelglanz Cella Kupferton   | Perspectives/<br>Depths | 1.3                | a              | 005/015              |
| 478                          | Alu Mirror Polished Clay Jar ✦<br>Alu-Spiegelglanz Clay Jar  | Elements                | 1.0                | a, b           | 005/015              |
| 478/636                      | Alu Mirror Polished Lava Clay Jar ✦<br>Alu-Spiegelglanz Lava Clay Jar  | Perspectives/Depths     | 1.3                | a              | 005/015              |
| 485/000                      | Alu Mirror Polished Special Natural - Industrial quality version of 470<br>Alu-Spiegelglanz Spezial Naturton - Industrie Qualität des Dekors 470 | Elements                | 1.0                | a, b           | 005/015              |
| 490                          | Copper Antique<br>Kupfer-Glatt Antik   | Gestures                | 1.3                | a, b           | 009                  |
| 490 SRM                      | Copper Antique SRM<br>Kupfer-Glatt Antik SRM   | SRM                     | 1.3                | a, b           | 009 SR               |
| 500/340                      | Brass Diamond Antique (vertical joint at about 610 mm)<br>Messing Diamond Antique (Stoßfuge bei Breite von ca. 610 mm)                           | Perspectives/Geometries | 1.3                | a, b           | 009                  |
| 500/340 SRM                  | Brass Diamond Antique SRM (vertical joint at about 610 mm)<br>Messing Diamond Antique SRM (Stoßfuge bei Breite von ca. 610 mm)                   | SRM                     | 1.3                | a, b           | 009 SR               |
| 500/491                      | Brass Plain Antique (vertical joint at about 610 mm)<br>Messing-Glatt Antik (Stoßfuge bei Breite von ca. 610 mm)                                 | Gestures                | 1.0                | a, b           | 009                  |
| 500/502                      | Brass Moon (vertical joint at about 610 mm)<br>Messing Moon (Stoßfuge bei Breite von ca. 610 mm)   | Gestures                | 1.3                | a              | 009                  |
| 546                          | Alu Brushed Stainless Steeltone<br>Alu-Strichmatt Edelstahlton   | Elements                | 1.0                | a, b           | 001                  |
| 630                          | Copper Black Patinated<br>Kupfer-Relief Patiniert  | Gestures                | 1.3                | a              | 002                  |
| 635/502                      | Copper Moon Turquoise<br>Kupfer Moon Türkis  | Gestures                | 1.3                | a              | 009                  |
| 636/502                      | Copper Moon Dark<br>Kupfer Moon Dunkel   | Gestures                | 1.3                | a              | 009                  |

a = 2440 x 1220 mm  
b = 3050 x 1220 mm  
e = 3050 x 1300 mm

On request we will provide you with the Arpa and Formica code matrix. Please contact us.  
Auf Anfrage übersenden wir Ihnen gerne die zu den Homapal Dekoren korrespondierenden Arpa und Formica Dekornummern.

LIST OF DECORS / DEKORÜBERSICHT

| Homapal Code<br>Homapal Code | Decor Name<br>Dekor Name   | Range<br>Kategorie      | Thickness<br>Dicke | Size<br>Format | Balancer<br>Gegenzug |
|------------------------------|--|-------------------------|--------------------|----------------|----------------------|
| 637/502                      | Copper Moon Light<br>Kupfer Moon Hell  | Gestures                | 1.3                | a              | 009                  |
| 641/000                      | Stainless Steel Brushed<br>Edelstahl Gebürstet   | Perspectives/Industrial | 0.8                | a, b           | 007                  |
| 690/340                      | Copper Diamond Antique<br>Kupfer Diamond Antique   | Perspectives/Geometries | 1.3                | a, b           | 009                  |
| 690/340 SRM                  | Copper Diamond Antique SRM<br>Kupfer Diamond Antique SRM   | SRM                     | 1.3                | a, b           | 009 SR               |
| 695D                         | Copper Stratos Diagonal<br>Kupfer-Glatt Stratos Diagonal   | Gestures                | 1.3                | a, b           | 009                  |
| 695D SRM                     | Copper Stratos Diagonal SRM<br>Kupfer-Glatt Stratos Diagonal SRM   | SRM                     | 1.3                | a, b           | 009 SR               |
| 704/966                      | Alu Cella Goldtone<br>Alu-Relief Cella Goldton   | Perspectives/<br>Depths | 1.3                | a, b           | 002                  |
| 791                          | Alu Brushed Natural Special - also available with Adverso (AD) surface<br>Alu-Strichmatt Naturton Spezial - Erhältlich auch in Adverso (AD) Oberfläche   | Elements                | 0.8                | a, b           | 001                  |
| 794                          | Alu Brushed Goldtone Special - also available with Adverso (AD) surface<br>Alu-Strichmatt Goldton Spezial - Erhältlich auch in Adverso (AD) Oberfläche   | Elements                | 0.8                | a, b           | 001                  |
| 796                          | Alu Brushed Steeltone Special - also available with Adverso (AD) surface<br>Alu-Strichmatt Stahlton Spezial - Erhältlich auch in Adverso (AD) Oberfläche | Elements                | 0.8                | a, b           | 001                  |
| 800/100                      | Alu Mesh Natural<br>Alu-Relief Mesh Naturton   | Perspectives/<br>Depths | 1.3                | a, b           | 002                  |
| 800/200                      | Alu Crush<br>Alu-Glatt Crush   | Gestures                | 1.0                | a, b           | 001                  |
| 800/200 SRM                  | Alu Crush SRM<br>Alu-Glatt Crush SRM   | SRM                     | 1.0                | a, b           | 001 SR               |
| 807/340                      | Alu Diamond Bronzestone<br>Alu-Relief Diamond Bronzeton  | Perspectives/Geometries | 1.0                | a, b           | 002                  |
| 807/980                      | Alu Plex Bronzestone<br>Alu-Relief Plex Bronzeton  | Elements                | 1.0                | a, b           | 001                  |
| 820/000                      | Alu Softmatt Natural - Industrial quality version of 444N<br>Alu-Gebürstet Softmatt Naturton - Industrie Qualität des Dekors 444N                        | Elements                | 0.8                | a, b           | 001                  |
| 820/000 SRM                  | Alu Softmatt Natural SRM<br>Alu-Gebürstet Softmatt Naturton SRM  | SRM                     | 0.8                | a, b           | 001 SR               |
| 825/100                      | Alu Mesh Champagne<br>Alu-Relief Mesh Champagnerton  | Perspectives/<br>Depths | 1.3                | a, b           | 002                  |
| 856                          | Alu Dots Steeltone<br>Alu-Relief Dots Stahlton   | Perspectives/Industrial | 1.3                | a, b           | 002                  |
| 8200                         | Magnetic Board for individual finish<br>Magnethaftplatte beidseitig geschliffen  | Magnetic & Boards       | 1.0                | a, b           | 8200                 |
| 8202                         | Magnetic Board White Glossy with grid points (board marker)<br>Magnethaftplatte Weiß Glänzend mit Rasterpunkten (Boardmarker)                            | Magnetic & Boards       | 1.0                | a, b           | 011                  |
| 8205                         | Magnetic Board Black Matt (chalk)<br>Magnethaftplatte Schwarz Matt (Kreide)  | Magnetic & Boards       | 1.0                | a, b           | 011                  |
| 8206                         | Magnetic Board White Glossy (board marker)<br>Magnethaftplatte Weiß Glänzend (Boardmarker)   | Magnetic & Boards       | 1.0                | a, b           | 011                  |
| 8207                         | Magnetic Board White Matt (projection and board marker)<br>Magnethaftplatte Weiß Matt (Projektionsfläche und Boardmarker)                                | Magnetic & Boards       | 1.0                | a, b           | 011                  |
| 8208                         | Magnetic Board Light Grey Glossy (board marker)<br>Magnethaftplatte Hellgrau Glänzend (Boardmarker)  | Magnetic & Boards       | 1.0                | a, b           | 011                  |
| 8211                         | Magnetic Board Green Matt (chalk)<br>Magnethaftplatte Grün Matt (Kreide)   | Magnetic & Boards       | 1.0                | a, b           | 011                  |
| 8214                         | Magnetic Board Smokey Blue Matt (chalk)<br>Magnethaftplatte Rauchblau Matt (Kreide)  | Magnetic & Boards       | 1.0                | a, b           | 011                  |
| 8224                         | Magnetic Board Stone Grey Glossy (board marker)<br>Magnethaftplatte Steingrau Glänzend (Boardmarker)   | Magnetic & Boards       | 1.0                | a, b           | 011                  |
| 8225                         | Magnetic Board Stone Grey Matt (chalk)<br>Magnethaftplatte Steingrau Matt (Kreide)   | Magnetic & Boards       | 1.0                | a, b           | 011                  |
| 8231                         | Magnetic Board Alu Crossbrushed Natural<br>Magnethaftplatte Alu Kreuzstrichmatt Naturton   | Magnetic & Boards       | 1.3                | a, b           | 011                  |
| 8232                         | Magnetic Board Apple Green Glossy (board marker)<br>Magnethaftplatte Apfelgrün Glänzend (Boardmarker)  | Magnetic & Boards       | 1.0                | a, b           | 011                  |
| 8233                         | Magnetic Board Macchiato Glossy (board marker)<br>Magnethaftplatte Macchiato Glänzend (Boardmarker)  | Magnetic & Boards       | 1.0                | a, b           | 011                  |

a = 2440 x 1220 mm  
b = 3050 x 1220 mm  
e = 3050 x 1300 mm

On request we will provide you with the Arpa and Formica code matrix. Please contact us.  
Auf Anfrage übersenden wir Ihnen gerne die zu den Homapal Dekoren korrespondierenden Arpa und Formica Dekornummern.

| Homapal Code<br>Homapal Code<br>Homapal Code | Decor Name<br>Dekor Name   | Range<br>Kategorie      | Thickness<br>Dicke | Size<br>Format | Balancer<br>Gegenzug |
|--|--|-------------------------|--------------------|----------------|----------------------|
| 8234   | Magnetic Board Macchiato Matt (chalk)<br>Magnettafplatte Macchiato Matt (Kreide)                               | Magnetic & Boards       | 1.0                | a, b           | 011                  |
| 8253   | Magnetic Board Wine Red Matt (chalk)<br>Magnettafplatte Weinrot Matt (Kreide)                                  | Magnetic & Boards       | 1.0                | a, b           | 011                  |
| 8259   | Magnetic Board Apple Green Matt (chalk)<br>Magnettafplatte Apfelgrün Matt (Kreide)                             | Magnetic & Boards       | 1.0                | a, b           | 011                  |
| 8267   | Magnetic Board Slate Black<br>Magnettafplatte Schiefer Schwarz   | Magnetic & Boards       | 1.3                | a, b           | 011                  |
| 8276   | Magnetic Board Curry Matt (chalk)<br>Magnettafplatte Curry Matt (Kreide)                                       | Magnetic & Boards       | 1.0                | a, b           | 011                  |
| 8277   | Magnetic Board Curry Glossy (board marker)<br>Magnettafplatte Curry Glänzend (Boardmarker)                     | Magnetic & Boards       | 1.0                | a, b           | 011                  |
| M2006  | Alu Plain Polished Bronzestone<br>Alu-Gebürstet Bronzeton  | Elements                | 1.0                | a, b           | 001                  |
| M4512  | Alu Crush Goldtone<br>Alu Crush Goldton  | Gestures                | 1.0                | a, b           | 001                  |
| M5308  | Plex Aluminium<br>Alu-Relief Plex Aluminium  | Elements                | 1.0                | a, b           | 001                  |
| M5309  | Plex Gold<br>Alu-Relief Plex Goldton   | Elements                | 1.0                | a, b           | 001                  |
| M5311  | Brushed Argent<br>Brushed Argent   | Elements                | 1.0                | a, b           | 001                  |
| M5312  | Brushed Umbra<br>Brushed Umbra   | Elements                | 1.0                | a, b           | 001                  |
| M5391  | Graphite Veil<br>Graphite Veil   | Gestures                | 1.3                | a, b           | 002                  |
| M5392  | Copper Veil<br>Copper Veil   | Gestures                | 1.3                | a, b           | 009                  |
| M6422  | Brushed Cupro<br>Brushed Cupro   | Elements                | 1.0                | a, b           | 001                  |
| M6423  | Brushed Brass<br>Brushed Brass   | Elements                | 1.0                | a, b           | 001                  |
| M6424  | Plex Copper<br>Alu-Relief Plex Kupferton   | Elements                | 1.0                | a, b           | 001                  |
| M6426  | Plex Brass<br>Alu-Relief Plex Brass  | Elements                | 1.0                | a, b           | 001                  |
| M6427  | Hammered Aluminium<br>Hammered Aluminium   | Perspectives/<br>Depths | 1.3                | b              | 002                  |
| M6428  | Hammered Argent<br>Hammered Argent   | Perspectives/<br>Depths | 1.3                | b              | 002                  |
| M6429  | Hammered Cupro<br>Hammered Cupro   | Perspectives/<br>Depths | 1.3                | b              | 002                  |
| M6431  | Hammered Graphite<br>Hammered Graphite   | Perspectives/<br>Depths | 1.3                | b              | 002                  |
| M6811  | Metallic Gray ✦  | Perspectives/Industrial | 1.0                | a, b           | 001                  |
| M6813  | Metallic Brass ✦   | Perspectives/Industrial | 1.0                | a, b           | 001                  |
| M6814  | Metallic Black ✦   | Perspectives/Industrial | 1.0                | a, b           | 001                  |
| M6815  | Metallic Copper ✦  | Perspectives/Industrial | 1.0                | a, b           | 001                  |
| M8547  | Matte Oxibronze (vertical joint at about 610 mm)<br>Matte Oxibronze (Stoßfuge bei Breite von ca. 610 mm)       | Gestures                | 1.0                | a, b           | 009                  |
| M9956  | Wax Rubbed Brass (vertical joint at about 610 mm) ✦<br>Wax Rubbed Messing (Stoßfuge bei Breite von ca. 610 mm) | Gestures                | 1.0                | a, b           | 009                  |
| M9957  | Oil Rubbed Brass (vertical joint at about 610 mm) ✦<br>Oil Rubbed Messing (Stoßfuge bei Breite von ca. 610 mm) | Gestures                | 1.0                | a, b           | 009                  |
| M9958  | Antique Rubbed Copper<br>Antique Rubbed Kupfer   | Gestures                | 1.3                | a, b           | 009                  |

a = 2440 x 1220 mm  
b = 3050 x 1220 mm  
e = 3050 x 1300 mm

On request we will provide you with the Arpa and Formica code matrix. Please contact us.  
Auf Anfrage übersenden wir Ihnen gerne die zu den Homapal Dekoren korrespondierenden Arpa und Formica Dekornummern.

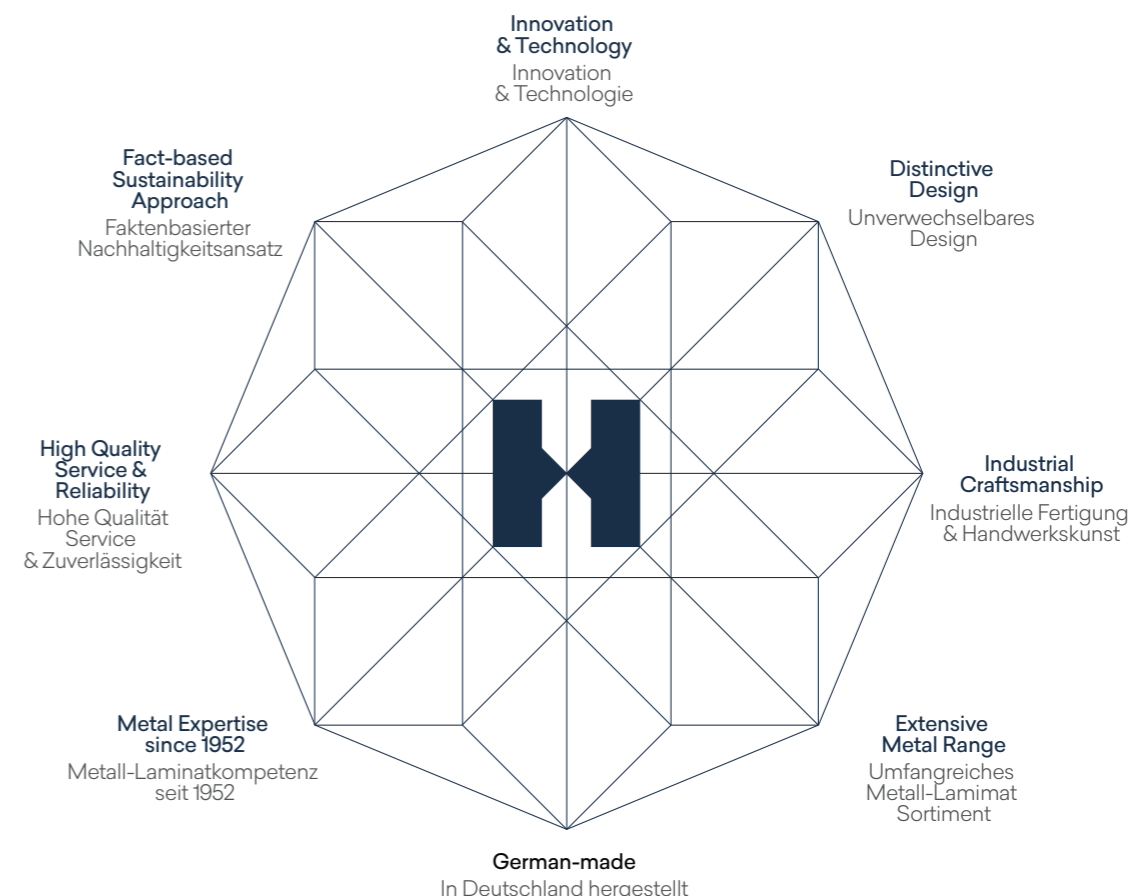
### Homapal - When technique forges beauty

Keeping the focus on customers and market demands, Homapal has grown from a specialist in laminates with real metal surfaces to one of the leading global manufacturers of special laminates (HPL). Thanks to the Metals and Magnetic & Boards ranges, which are continuously developed and adapted in line with the latest market trends, Homapal solutions offer almost unlimited scope for creativity and customisation. Homapal uses thin foils made of aluminium, copper, brass, and stainless steel as the top layer of their laminates. A special embossing process gives the surfaces their unique textures. Homapal laminates are used both in mass-produced furniture and public settings – in hotels and bars, on cruise ships and in clubs, in restaurants and in shops – essentially wherever interior surfaces are to be enhanced. Homapal is part of Broadview Materials, a global group of leading brands in surface materials, together with well-known brands like Formica®, FENIX®, Arpa®, Getacore®, Trespa®, Westag® and Worktop Express®.

### Homapal – Wenn Technik Schönheit schmiedet

Mit Fokus auf Kunden- und Marktanforderungen hat sich Homapal vom Spezialisten für Echtmetal-Schichtstoffe zu einem der weltweit führenden Hersteller von Spezienschichtstoffen (HPL) entwickelt. Dank der großen Auswahl an Metall-Laminaten und Magnettafplatten, die kontinuierlich weiterentwickelt und an die neuesten Markttrends angepasst werden, bieten Homapal Produkte einen nahezu unbegrenzten Spielraum an Kreativität und Individualität. Homapal verwendet dünne Folien aus Aluminium, Kupfer, Messing und Edelstahl als oberste Schicht der Schichtstoffe. Ein spezielles Prägeverfahren verleiht den Oberflächen ihre einzigartige Struktur. Ihren Einsatz finden Homapal Laminat sowohl in der Einzel- wie Serienfertigung ebenso wie im Objektbereich – in Hotels und Bars, auf Kreuzfahrtschiffen und in Clubs, Restaurants und im Ladenbau – überall dort, wo Flächen veredelt werden sollen. Homapal ist Teil der Broadview Materials, einer globalen Gruppe von führenden Marken für Oberflächenmaterialien, zusammen mit bekannten Marken wie Formica®, FENIX®, Arpa®, Getacore®, Trespa®, Westag® und Worktop Express®.

### A made-in-Germany product for a global market Ein Made-in-Germany-Produkt für einen globalen Markt



## Product Overview

This excerpt from the set of technical information is intended for guidance only and must not be used as any basis for processing Homapal products. Detailed technical information on the various products is available on [www.homapal.info](http://www.homapal.info)

### Board panel sizes:

Refer to letters (a, b, e) provided in the list of decors.

### Board panel thicknesses:

Depending on production method: 0.8 – 1.8 mm. For some decors, compact boards are available on request in a maximum thickness of 10 mm.

### Temperature load:

Homapal products are not recommended for applications where it is exposed to heat sources that can raise the material temperature to over 80°C. Prolonged or extreme heat can cause damage to the surface. To prevent heat damages on surfaces of Homapal products, always place a trivet or a heat protection pad underneath hot objects, such as hot pans, frying pans, coffee pots, etc. Never put hot objects or other heat sources directly onto a work surface made with products from Homapal. For detailed information on care and maintenance please visit [www.homapal.info](http://www.homapal.info). Our warranty does not cover damage resulting from failure to comply with our instructions and guidelines, including but not limited to damage caused by physical impact, chemical impact (e.g., harsh cleaning agents and solvents), thermal impact (e.g., excessive heat of objects or appliances above 80°C) or misuse.

### Hygiene/cleaning:

Homapal metal laminates have a sealed, hygienic surface. Homapal metal laminates are easy to clean with water and soapy water. A soft, non-linting cloth should always be used for cleaning. Highly alkaline, highly acidic as well as cleaning products containing scouring agents must not be used. Do not use any solvent-based cleaning products. Magnetic boards have a sealed, hygienic surface. With regard to the specific surface properties of the various product options, we draw attention to our technical data sheets. Depending on product type, a cotton cloth or microfibre cloth can be used for cleaning. Under no circumstances must moisturising cleansers, such as dishwashing detergents, be used. Kindly refer to our latest cleaning guidelines available on [www.homapal.info](http://www.homapal.info)

### Formaldehyde:

The Homapal metal and magnetic board collections have been tested for formaldehyde emissions under DIN EN 717-1. For further information, visit [www.homapal.info](http://www.homapal.info)

### Processing:

Homapal laminates can be sawn, milled and drilled in the same way as all standard laminates (HPL) using carbide-tipped cutting tools. When machining stainless steel laminates, Tuet, SRM and magnetic boards, please observe our detailed, technical information. Homapal magnetic boards should either be bonded with contact adhesive or with adhesives with a high solids content. Always observe the maximum pressing temperatures and pressures that are specified for the various products in our technical information. Homapal laminates can be bonded to various substrate materials. The substrate should be selected for its characteristics as well as the characteristics of the application, the intended use of the composite panel, and the installation environment. For the surface Homapal thin sheets to appear smooth and uniform, the surface of the substrate should also be of similar characteristics. Imperfections on the substrate in fact, tend to be transferred to the sheet surface, especially if the final laminate is very thin. The choice and application of adhesives, from among the many types available, should be determined by the type of substrate and the purpose of the finished product and the glue manufacturer guidelines. Information on bonding of Homapal products to substrates is given on [www.homapal.info](http://www.homapal.info) under the download section.

### Customized designs:

Available, depending on quantity.

All Homapal laminates are provided with a protective film to prevent damage during transportation. Homapal metal laminates and Homapal magnetic boards are only recommended for vertical use in decorative applications. Homapal SRM can be used vertically and horizontally. Please refer to our separate technical specifications in this regard. Use in rooms exposed to moisture cannot be recommended. Our products, especially the SRM surfaces, are improving constantly. Please understand that changes of our delivery program are possible at any time. Therefore order/review our most current datasheet before processing.

Status: January 2026

## Produktübersicht

Dieser Auszug aus den technischen Informationen dient nur als Orientierung und darf nicht als Grundlage für die Verarbeitung herangezogen werden. Ausführliche technische Informationen zu den einzelnen Produkten sind unter [www.homapal.info](http://www.homapal.info) erhältlich.

### Plattenmaße:

Siehe Buchstaben (a, b, e) unter den Dekoren in der Dekorübersicht.

### Plattenstärken:

Je nach Fertigungstechnik 0,8 – 1,8 mm. Kompaktplatten dekorabhängig bis max. 10 mm auf Anfrage.

### Temperaturbelastung:

Homapal Produkte werden nicht für Anwendungen empfohlen, bei denen sie Wärmequellen ausgesetzt sind, die die Materialtemperatur auf über 80°C erhitzen können. Länger andauernde oder extreme Hitze kann die Oberfläche beschädigen. Um Hitzeschäden an der Oberfläche von Homapal Produkten zu vermeiden, legen Sie immer einen Untersetzer oder eine Hitzeschutzunterlage unter heiße Gegenstände, wie z.B. heiße Pfannen, Bratpfannen, Kaffeemaschinen, etc. Stellen Sie niemals heiße Gegenstände oder andere Wärmequellen direkt auf eine Arbeitsfläche, die mit Produkten von Homapal hergestellt wurde. Ausführliche Informationen zu Pflege und Reinigung finden Sie unter [www.homapal.info](http://www.homapal.info). Unsere Garantie deckt keine Schäden ab, die auf die Nichtbeachtung unserer Anweisungen und Richtlinien zurückzuführen sind, einschließlich, aber nicht beschränkt auf Schäden, die durch physische Einwirkungen, chemische Einwirkungen (z.B. scharfe Reinigungs- und Lösungsmittel), thermische Einwirkungen (z.B. übermäßige Hitze von Gegenständen oder Geräten über 80°C) oder Missbrauch verursacht wurden.

### Hygiene/Reinigung:

Homapal-Metalllaminat weisen eine geschlossene hygienische Oberfläche auf. Homapal-Metalllaminat lassen sich gut mit Wasser und Seifenlauge reinigen. Zur Reinigung sollte immer ein weiches, nicht fußelndes Tuch benutzt werden. Stark alkalische, stark saure sowie Reinigungsmittel mit scheuernden Bestandteilen dürfen nicht verwendet werden. Es dürfen keine auf Lösemittel basierenden Reinigungsmittel eingesetzt werden. Homapal-Magnethaftplatten weisen eine geschlossene hygienische Oberfläche auf. Aufgrund der spezifischen Oberflächeneigenschaften der einzelnen Varianten verweisen wir auf unsere technischen Datenblätter. Zur Reinigung kann, je nach Variante, ein Baumwolltuch oder Mikrofaser Tuch verwendet werden. Keinesfalls dürfen rückfettende Reiniger wie beispielsweise Geschirreiniger verwendet werden. Nähere Informationen finden Sie in unseren aktuellen Reinigungs-Empfehlungen auf [www.homapal.info](http://www.homapal.info)

### Formaldehyd:

Die Homapal-Kollektionen Metall und Magnethaftplatten wurden nach DIN EN 717-1 auf die Abgabe von Formaldehyd untersucht. Für nähere Informationen besuchen Sie [www.homapal.info](http://www.homapal.info)

### Verarbeitung:

Homapal-Laminat lassen sich wie alle normalen Schichtpressstoffplatten (HPL) mit hartmetallbestückten Werkzeugen sägen, fräsen und bohren. Bei der Bearbeitung der Edelstahl-Laminat, Tuet, SRM und Magnethaftplatten beachten Sie bitte unsere detaillierten, technischen Hinweise. Homapal-Magnethaftplatten sollten entweder mit Kontaktkleber oder mit Klebern mit einem hohen Feststoffanteil verklebt werden. Die maximalen Presstemperaturen und der maximale Druck, die für die einzelnen Produkte in unseren technischen Informationen angegeben werden, sind zu beachten. Homapal-Laminat können mit verschiedenen Trägermaterialien verbunden werden. Das Trägermaterial sollte aufgrund seiner Eigenschaften sowie der Eigenschaften der Anwendung, der beabsichtigten Verwendung der Verbundplatte und der Installationsumgebung ausgewählt werden. Damit die Oberfläche der Homapal-Dekore glatt und gleichmäßig erscheint, sollte die Oberfläche des Trägermaterials ebenfalls ähnliche Eigenschaften aufweisen. Unvollkommenheiten auf dem Untergrund neigen nämlich dazu, sich auf die Plattenoberfläche zu übertragen, insbesondere wenn das endgültige Laminat sehr dünn ist. Die Auswahl und Anwendung der Klebstoffe unter den vielen verfügbaren Typen sollte sich nach der Art des Trägermaterials und dem Zweck des Endprodukts sowie nach den Richtlinien des Klebstoffherstellers richten. Informationen zum Verkleben von Homapal-Produkten auf Trägermaterialien finden Sie auf [www.homapal.info](http://www.homapal.info) im Download-Bereich.

### Sonderanfertigungen:

Möglich, aber abhängig von der Menge.

Alle Homapal-Laminat sind mit einer Schutzfolie gegen Beschädigungen während des Transports versehen. Homapal-Metalllaminat und Homapal-Magnethaftplatten grundsätzlich nur für den vertikalen Einsatz im dekorativen Bereich empfohlen werden. Homapal-SRM kann vertikal und horizontal eingesetzt werden. Beachten Sie hierzu unsere gesonderten technischen Daten. Ein Einsatz in Feuchträumen kann nicht empfohlen werden. Nähere Hinweise entnehmen Sie bitte den technischen Datenblättern auf unserer Webseite. Unsere Produkte, insbesondere die Oberfläche SRM, unterliegen einer ständigen technischen Weiterentwicklung. Daher sind Änderungen des Lieferprogramms jederzeit möglich. Bitte fordern Sie vor der Verarbeitung aktuelle Informationen sowie unser technisches Datenblatt an.

Status: Januar 2026

## Product Information / Certifications

### Reaction to fire - EN 13501-1

The reaction to fire of Homapal products is related to the final composite panel where a laminate is bonded to a substrate.

Since the test results also depend on the substrate, the adhesive and the bonding techniques applied, the composite manufacturer is responsible for the correct execution of the test in accordance with the applicable standards and test methods required for the specific application field.

### IMO Certification

Homapal products are tested for compliance in accordance with the Marine Equipment Directive (MED). Please inquire with Homapal about the scope and conditions applying to certification.

## Produktinformation / Zertifikate

### Brandverhalten nach EN 13501-1

Das Brandverhalten von Homapal-Produkten bezieht sich auf das fertige Verbundelement, bei dem ein Laminat auf ein Trägermaterial geklebt wird. Da die Prüfergebnisse auch vom Trägermaterial, dem Klebstoff und den angewendeten Verbindungstechniken abhängen, ist der Hersteller des Verbundelements für die korrekte Durchführung der Prüfung gemäß den für den jeweiligen Anwendungsbereich erforderlichen Normen und Prüfmethoden verantwortlich.

### IMO Zertifizierung

Homapal-Produkte werden gemäß der Schiffsausrüstungsrichtlinie (Marine Equipment Directive - MED) auf Konformität geprüft. Bitte erkundigen Sie sich bei Homapal über den Umfang und die Bedingungen der Zertifizierung.



The mark of responsible forestry

Only products marked with FSC® are FSC® certified.

Homapal products are available with the "Forest Stewardship Council® (FSC®)" certification upon request, in restricted quantities and jurisdictions.



The mark of responsible forestry

Nur die als FSC® gekennzeichneten Produkte sind FSC® zertifiziert.

Homapal Produkte sind, auf Anfrage, mit der Zertifizierung des „Forest Stewardship Council® (FSC®)“, in eingeschränkten Mengen und Gebieten erhältlich.



## DISCLAIMER

### GENERAL

These terms apply to the use of this document and such use automatically means that the other party agrees to these terms. The information provided by Homapal GmbH ("Homapal") in this document is solely indicative. Homapal is unable to warrant the accuracy and completeness of this information. Homapal may change the information included in this document at any time and without further notice. Homapal's customers and third parties must ascertain that they have the most recent document (for the most recent version, please consult: [www.homapal.com](http://www.homapal.com)). No rights can be derived from the information provided; the use of the information is at the other party's risk and responsibility. Homapal does not warrant that the information in this document is suitable for the purpose for which it is consulted by the other party. This document does not contain any design, structural calculation, estimate or other warranty or representation that customers and third parties may rely on. This document does not guarantee any properties of Homapal products. Colours used in Homapal's communications (including but not limited to printed matter) and in samples of Homapal's products may differ from the colours of the Homapal products to be supplied. Samples are not intended for use in product tests and are not representative of characteristics of the Homapal products. Homapal's products and samples are produced within the specified colour tolerances and the colours (of production batches) may differ, even if the same colour is used. The viewing angle also influences the colour perception. Metallic panels feature a surface whose colour appears to change based on the direction from which it is viewed. The specified colour stability and colour specifications relate only to the decorative surface of the Homapal products, not to the core material and samples of the Homapal products. Customers and third parties must have a professional adviser inform them about (the suitability of) the Homapal products for all desired applications and about applicable laws and regulations. Homapal does not warrant the above. The most recent version of the current delivery programme and the Technical Data Sheet can be found at [www.homapal.com](http://www.homapal.com) and [www.hompapal.info](http://www.hompapal.info). Only the information in the most recent and valid Technical Data Sheet should be used to select and provide advice regarding Homapal products. Homapal reserves the right to change (the specifications for) its products without prior notice.

### LIABILITY

Homapal is not liable (neither contractual nor non-contractual) for any damage arising from or related to the use of this document, except if and to the extent that such damage is the result of wilful misconduct or gross negligence on the part of Homapal and/or its management. The limitation of liability applies to all parties affiliated with Homapal, including but not limited to its officers, directors, employees, affiliated enterprises, suppliers, distributors, agents, and representatives.

### GENERAL CONDITIONS

All oral and written statements, offers, quotations, sales, supplies, deliveries and/or agreements and all related activities of Homapal are governed by the Homapal General Terms and Conditions of Sale, which can be found on and downloaded from the Homapal website, [www.homapal.com/terms-of-sale/](http://www.homapal.com/terms-of-sale/). A copy of these general conditions of sale will be provided free of charge on request. All general terms and conditions other than the conditions mentioned above are dismissed and do not apply, regardless of whether such terms and conditions are referred to on requests for offers, offer confirmations, stationery and/or other documents of the other party, even if Homapal does not expressly object to such terms and conditions.

### INTELLECTUAL PROPERTY

All intellectual property rights and other rights regarding the content of this document (including logos, text and photographs) are owned by Homapal and/or its licensors. Any use of the content of this document, including distribution, reproduction, disclosure, storage in an automated data file or the dispatch of such a file without Homapal's prior written consent is explicitly prohibited. Homapal and Homapal Aquaris are registered trademarks of Homapal.

### QUESTIONS

Should you have any questions or comments, please do not hesitate to contact Homapal.

Shaping Emotions in Interiors

HOMAPAL



[homapal.com](http://homapal.com)



we are  
BROADVIEW  
MATERIALS

EN-DE 01/2026