









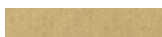




# DecoMetal<sup>®</sup>

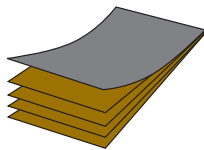
METAL LAMINATES *by* FORMICA GROUP

NEW ADDITIONS 2012

## NEW ADDITIONS 2012

- New, real metal surfaces in gold, aluminium, copper, bronze and graphite colourations give an exclusive touch and authenticity to any environment.
- Unique and innovative Plex texture illuminates the beauty and radiance of natural metals, from traditional cool to new warm tones.
- Expanded colour range of classic Brushed finish, including on-trend brown and warm silver.
- The rich tones and intriguing surface relief of Korten evoke the look and feel of one of the favourite materials in modern architecture.

	Code	Name	Grade (EN438-8/EN438-3)	Sheet Size (mm)
	M2125 (Replaces M2023)	Natural Matt Aluminium II	MTF	3050 x 1220 / 3050 x 1300
	M4692 (Replaces M2046)	Matt Aluminium Footplate II	MTF	3050 x 1220
	M4788 (Replaces M2047)	Matt Aluminium Dots II	MTF	3050 x 1220
	M5306	Plex Argent	MTF	3050 x 1220
	M5307	Plex Umbra	MTF	3050 x 1220
	M5308	Plex Aluminium	MTF	3050 x 1220
	M5309	Plex Gold	MTF	3050 x 1220
	M5310	Plex Graphite	MTF	3050 x 1220
	M5311	Brushed Argent	MTF	3050 x 1220
	M5312	Brushed Umbra	MTF	3050 x 1220
	M5316*	Korten	VGS	3050 x 1220



DecoMetal® high pressure laminate is created using real metal foils\* over a laminate core to create stunning metallic laminates that are durable but very light compared to sheet metal. Textures and patterns are applied to some metallic laminates to create outstanding effects. A complete range of striking colours, patterns and finishes is available. Nominal thickness varies depending upon metallic foil and texture.

DecoMetal laminates meet the requirements of EN438:2005 Grade MTF with IMO/MED and USCG fire requirements approval. Please request specific details.

MTF & VGS grades are recommended for vertical applications.  
All DecoMetal laminates are delivered with a protective film.

Grade HPL/EN 438-8 MTF Metal, Flame retardant, Thin high pressure decorative laminate.

Grade HPL/EN 438-3 VGS Vertical, general purpose, standard grade.

\*M5316 Korten features a melamine surface incorporating iron particles. Some magnetic effect may be evident. Sparks can be emitted during processing.

M5316 Korten is a hand-made design and each individual sheet is unique. Variations between sheets are characteristic of the design and manufacturing process.

To view the full DecoMetal range, visit [www.formica.com](http://www.formica.com) or contact your local Formica Group office.



ISO 14001:2004



The mark of responsible forestry



Formica Group are FSC® certified and comply with the requirements of FSC. Network of participating European Formica Group sites is shown on certificate number TT-COC-003588.

The Company retains the right to change specifications at any time without prior notification. Designs given in this publication have been matched as closely as printing conditions allow. We do recommend, however, that you order samples before final specification, fabrication or installation, as the colour samples in the brochure may differ in shade, hue, tone or brightness to the products purchased.

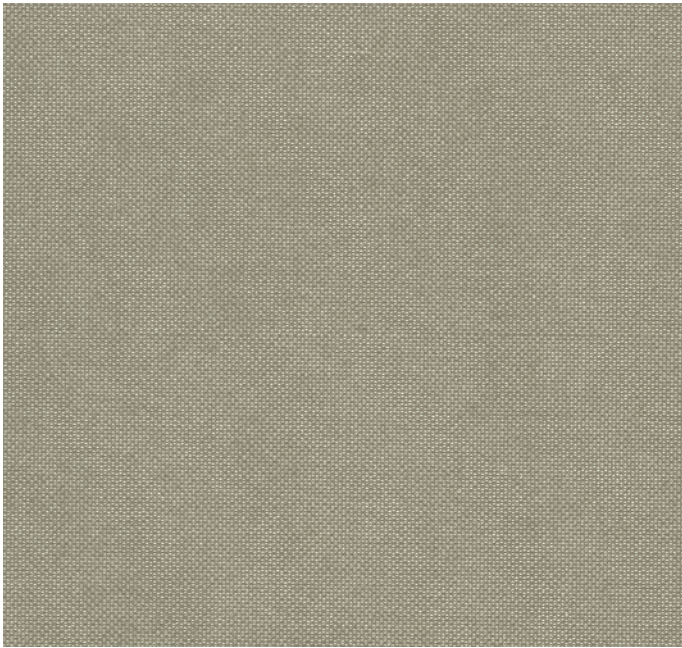
# DecoMetal<sup>®</sup>

METAL LAMINATES *by* FORMICA GROUP

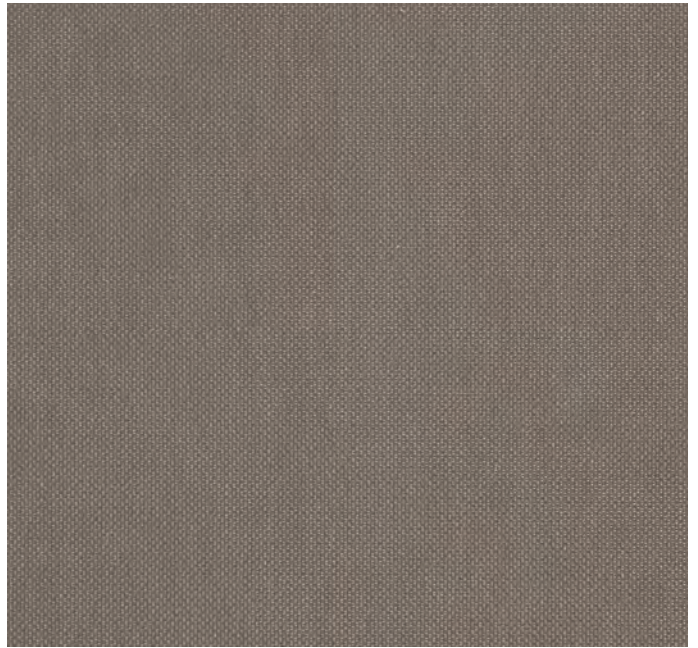


**M5316** Korten

Printed samples are shown at approximately 1:1 scale.



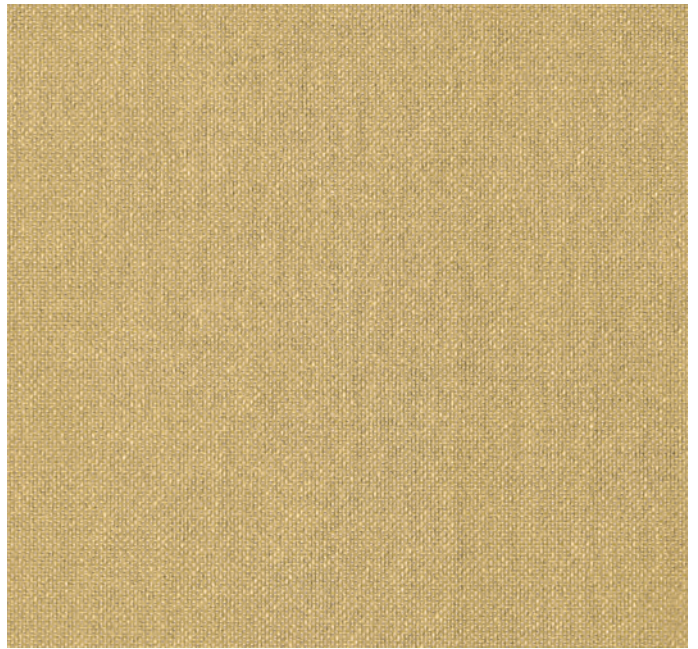
**M5306** Plex Argent



**M5307** Plex Umbra



**M5308** Plex Aluminium



**M5309** Plex Gold



**M5310** Plex Graphite

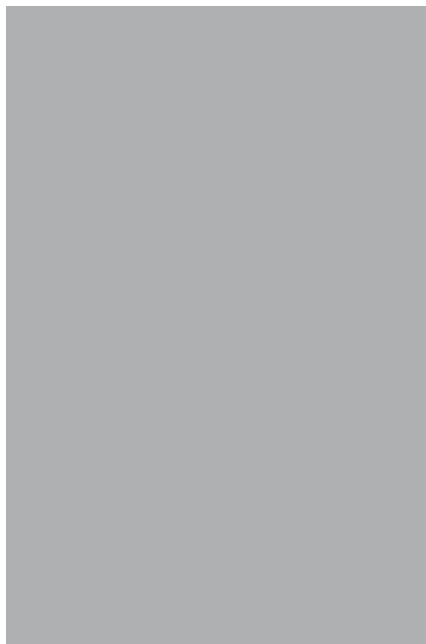




**M5311** Brushed Argent



**M5312** Brushed Umbra



**M2125** Natural Matt Aluminium II  
(Replaces M2023)



**M4692** Matt Aluminium Footplate II  
(Replaces M2046)



**M4788** Matt Aluminium Dots II  
(Replaces M2047)



**Austria**

Tel: +49 (0) 180 367 64 22  
austria@formica.com

**Belgium**

Tel: +32 2 705 18 18  
contact.belgie@formica.com

**Denmark**

Tel: +45 43 58 82 00  
info.danmark@formica.com

**Finland**

Tel: +358 3 5800 200  
info.finland@formica.com

**France**

Tel: +33 (0) 3 87 29 10 13  
service.echantillons@formica.com

**Germany**

Tel: +49 (0) 180 367 64 22  
kontakt.deutschland@formica.com

**Holland**

Tel: +31 (0) 70 413 48 20  
contact.nederland@formica.com

**Ireland**

Tel: +353 1 872 4322  
samples.uk@formica.com

**Italy**

Tel: +39.011.9027092  
italia@formica.com

**Middle East**

Tel: +971 4 3219791  
middle.east@formica.com

**Norway**

Tel: +47 800 13 016  
info.norge@formica.com

**Poland**

Tel: +48 22 516 20 84/85  
info.polska@formica.com

**Russia**

Tel: +7 495 646 07 25  
Samples tel: +8 800 333 11 63  
russia@formica.com

**Spain**

Tel: +34 902 11 47 73  
muestras@formica.com

**Sweden**

Tel: +46 42 38 48 30  
info.sverige@formica.com

**Switzerland**

Tel: +41 44 818 88 18  
schweiz@formica.com

**United Kingdom**

Tel: +44 191 259 3100  
Samples tel: +44 191 259 3512  
samples.uk@formica.com

formica.com