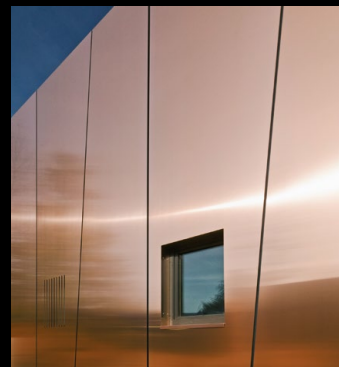
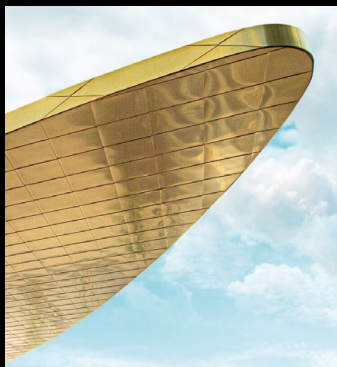
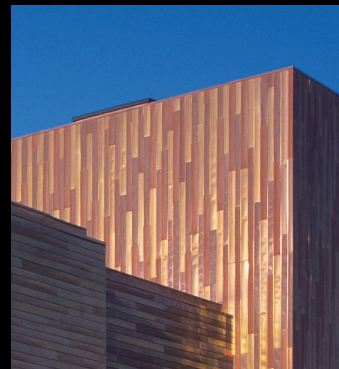
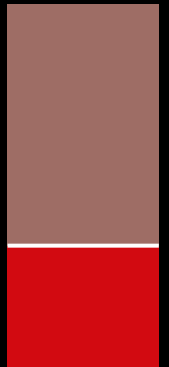


TECU®  
Copper for Roof and Façade Cladding  
*Product Range - Overview*



KME Germany GmbH & Co. KG  
TECU® Product Range - Overview -  
[EN]



*The decision to design building cladding with copper leaves plenty of opportunities for creativity. Durable TECU® products from KME offer many unique possibilities. The striking natural surfaces in copper and copper alloys allow for singular design. Prefabricated system elements offer a wide range of solutions, from free-form designs to the simple and economic cladding of larger areas.*

*Once in place, TECU® products come to life and become even more beautiful over time.*

## TECU®

### Modern solutions in copper – for roof and façade

#### TECU® Premium

An innovative alloy of copper with a small proportion of high-grade tin. For easy processing, an extraordinary appearance from the very beginning and for intensive and rapid oxidation. TECU® Premium has a finely beaded pre-structure and a matte finish.



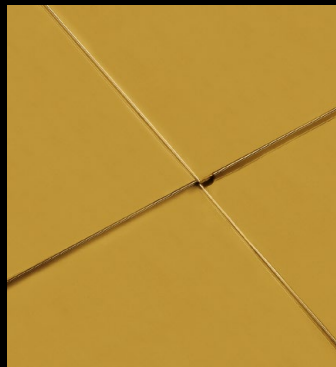
#### TECU® Bronze

An alloy of copper and tin with a pleasant, warm, reddish brown surface, which develops in a manner characteristic for bronze through the effects of weathering.



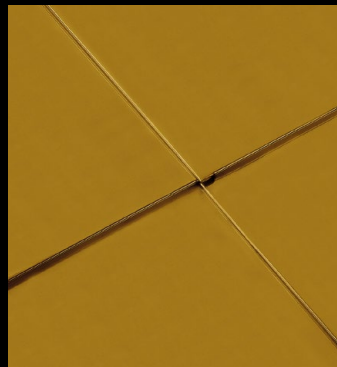
#### TECU® Gold

A copper alloy with a long-lasting warm, brown golden surface. Façade solutions in TECU® Gold give buildings a discreet value image.



#### TECU® Brass

A copper-zinc alloy for façade cladding with a yellowish golden surface that regularly changes with the effects of weathering.



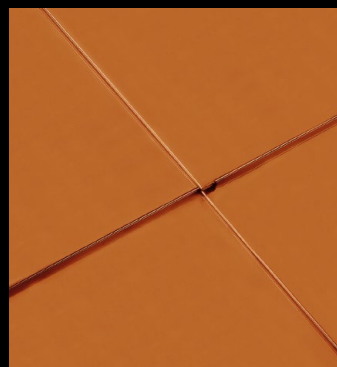
#### TECU® Oxid

Roofing and façade cladding material, oxidised on both sides: The aesthetic appearance of an attractive, naturally oxidised surface right from the moment it is installed.



#### TECU® Classic\_coated

Bright rolled, high quality copper with many unique benefits: Simple and economic handling, extremely long life and a surface that becomes increasingly attractive.



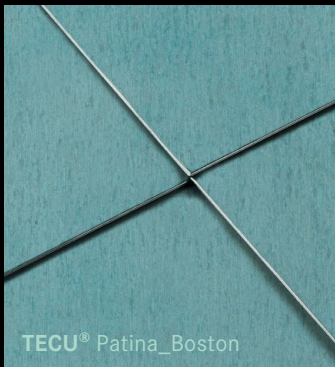
### TECU® Copper — a sustainable material

Copper is 100 percent recyclable by nature. It can be used over and over again without any loss of performance or qualities. KME already obtains considerably more than half of all its raw material needs from copper recycling, and that share is constantly growing. The decisive advantage for **TECU®**: the different copper materials are made exclusively and to 100% from recycled copper! This significant added value of many **TECU®** products can be a decisive argument in favour of use in buildings with LEED, BREEAM or DGNB certificates, which are increasingly in demand, particularly for public buildings.



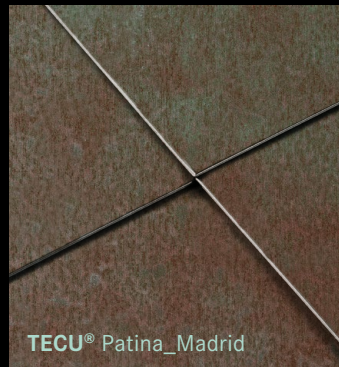
### TECU® Patina

Copper material, patinated green on one side. The natural green patina of copper impresses right from the outset – without having to wait for the atmosphere to exert its influences.



### *New diversity for a green facade!*

The many different nuances and shades of the surface blend only gradually. After installation the surfaces continue to develop in a completely natural manner being characteristic of copper.



### TECU® Iron

*Copper: sensationally different!*  
Light and shade, bright and dark, dry and wet – all generate different optical nuances that make **TECU® Iron** a popular material for metal roofs and facades. **TECU® Iron** enables you to create fascinating and lively perspectives with copper in facade cladding and in roof design.

## TECU® BOND



### TECU® Bond

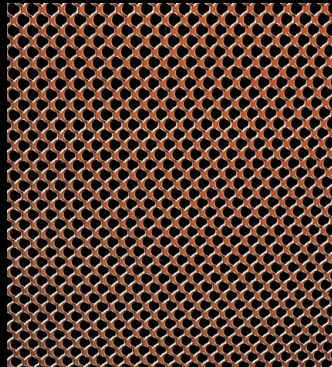
Cladding large façades and interior areas quickly and eco-nomically with TECU® quality copper – without compromising on the outward appearance. The composite material offers all the aesthetic properties of the TECU® surfaces but can be cut to size and installed on large areas much more quickly and easily.

## TECU® DESIGN



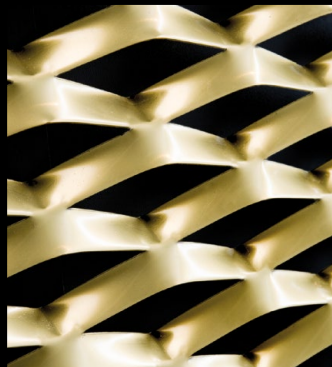
### \_punch

The perforations of the TECU® surfaces are made by punching the copper and copper alloy strips after production. The punched parts are fed immediately to the recycling process where they are further processed.



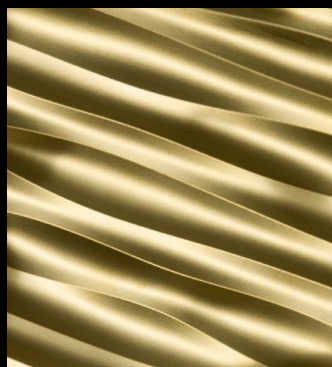
### \_flatmesh

The TECU®\_flatmesh designs are also made by perforating the copper and copper alloy strips and then stretching the material. The stretched metal is then rolled to produce the almost flat TECU®\_flatmesh surface.



### \_mesh

After the copper and copper alloys strips have been produced the TECU®\_mesh structures are created by perforating and then stretching the material.



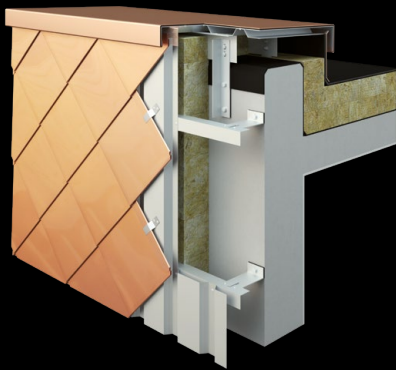
### \_shape

After the copper and copper alloy strips are produced the three-dimensional shapes of the TECU® surfaces are made by hammering, stamping and hydroforming. These processes have no effect on the familiar positive TECU® properties.

# TECU® System & Engineering

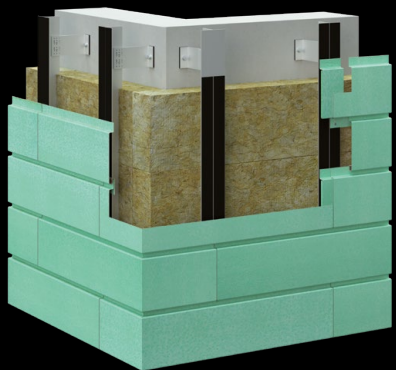
## TECU® System Shingles

Besides their special aesthetic qualities, TECU® System Shingles offer decisive economic advantages in façade design. Cladding elements are laid simply by hanging them and interlocking them with each other.



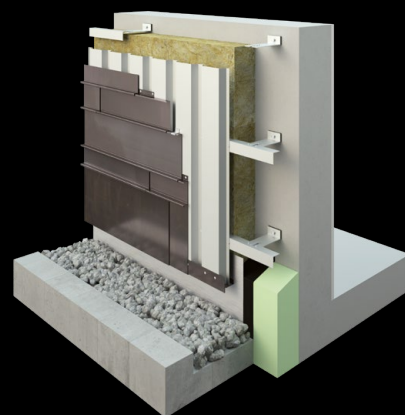
## TECU® System Cassettes

TECU® Cassettes are cladding elements with folded edges on all sides available in a range of geometrical proportions from 1:1 to 1:4. They are exclusively pre-profiled to the customer specifications and/or according to suggestions made by the architect.



## TECU® Slot-In Panels System

TECU® Panels are two-sided cladding elements, with or without an end base, depending on the construction. Individual lengths are as long as 4,000 mm with a standard width of up to approx. 400 mm. Assembly at the building site is performed according to the tongue and groove principle or by overlapping.



## TECU® Standing-Seam System

The use of angle standing seams and batten cap cladding is an ideal solution for custom designed free forms as well as for traditional roof and façade constructions. TECU® products for these types of cladding are available in sheets and strips.

**KME Germany GmbH & Co. KG**

Architectural Solutions  
Klosterstraße 29  
49074 OSNABRÜCK  
GERMANY  
Fon +49 (0)541 321-2000  
Fax +49 (0)541 321-2111  
info-tecu@kme.com



For further detailed information  
about TECU® products and systems,  
please have a look on our website

[www.kme.com/tecu](http://www.kme.com/tecu)

**KME Italy S.p.A.**

Architectural Solutions  
Via Morimondo, 26  
Ex Richard Ginori Ed.01 Int. A5  
20143 MILANO  
ITALY  
Fon +39 02 89140261  
Fax +39 02 89140281  
info-tecu-italy@kme.com

**KME Rolled France S.A.S.**

Architectural Solutions  
11 bis, rue de l'Hôtel de Ville  
92411 COURBEVOIE CEDEX  
FRANCE  
Fon +33 (0)1 47896-849  
Fax +33 (0)1 47896-932  
info-tecu-france@kme.com

**KME Spain S.A.U.**

Architectural Solutions  
Ctra. de Sabadell B -140, km5  
Sta. Perpètua de Mogoda  
08130 BARCELONA  
SPAIN  
Fon +34 93 5747090  
Fax +34 93 5747091  
info-tecu-iberica@kme.com

**KME Yorkshire Limited**

Architectural Solutions  
Savern House, Prescott Drive  
Warndon Business Park  
WORCESTER  
WR4 9NE  
UNITED KINGDOM  
Fon +44 (0)1905 751800  
Fax +44 (0)1905 751801  
info-tecu-uk@kme.com



® = registered trademark

All changes reserved. Owing to limitations in printing technology, the colours reproduced in this brochure should be regarded as approximate equivalents to the colours described.

